



advanced  
beneficial  
ideas

# KATALOG CATALOG



[abisms.com](http://abisms.com)

**COMPANY PROFILE**  
**ŞİRKET PROFİLİ**

**03**

**75**

**İZOLASYON ÜRÜNLERİ**  
**PLUGS**

**ROLLERS**  
**RULMANLAR**

**09**

**79**

**PLASTİKLER**  
**PLASTICS**

**HANDLES**  
**KOLLAR**

**23**

**93**

**METALLER**  
**METALIC PARTS**

**MECHANISMS**  
**MEKANİZMALAR**

**35**

**99**

**ZAMAKLAR**  
**ZAMAKS**

**HINGES**  
**MENTEŞELER**

**57**

**105**

**ÜSTTEN TAŞIMALI**  
**ARABALAR**  
**TOP TRUCKS**

**CORNER JOINTS**  
**KÖŞE BAĞLANTILAR**

**63**

**111**

**YAĞMUR TAHLİYE**  
**KAPAKLARI**  
**DRAINAGES**

**STEEL RAILS**  
**ÇELİK RAYLAR**

**71**

**115**

**SETLER**  
**SETS**

## TARİHCEMİZ / OUR HISTORY

Mutlu ve memnun müşteri anlayışıyla **2000** yılında İstanbul'da kurulan **STOPER ENDÜSTRİYEL ÜRÜNLER**, yıllar içinde edindiği tecrübeler ile inşaat ve sanayi sektörleri için; asansör ürünleri, mimari sistem aksesuarları, hareketli güneş kırıcı sistemler ve müşteri istekleri doğrultusunda projelere özel ürünler üretmektedir.

Üretim kapasitesinin artışı ve yapılan yatırımlarla gelişen **STOPER**, yurtiçi ve yurtdışında sektörün bilinen bir markası haline gelmiştir. Hizmet verme kapasitesini gün geçtikçe arttıran **STOPER**, genişleyen makina parkuru sayesinde her türlü üretim esnekliği ve refleksine ulaşmıştır.

Uluslararası kalite ve standartlara uygun üretim ilkesini benimseyen **STOPER** hızlı termin, doğru fiyat ve zamanında teslim misyonu ile çalışmalarını sürdürmektedir.

Genişleyen sektör çeşitliliği ve ürün portföyü sonucunda **2022** senesi itibari ile inşaat ve mimari sektörleri için ürettiği ürünleri **STOPER MİMARİ YAPI SİSTEMLERİ (SMS)** şirketi adı altında toplayarak üretim ve pazarlama hayatına devam etme kararı almıştır.

### STOPER INDUSTRIAL PRODUCTS

Established in Istanbul in **2000** with the understanding of happy and satisfied customers for the construction and industry sectors with its experience gained over the years; it produces elevator products, architectural system accessories, mobile sunshade systems, and special products for projects in line with customer requests.

Developing with the increase in production capacity and the investments made, **STOPER** has become a well-known brand in the sector both at home and abroad. Increasing its service capacity day by day, **STOPER** has reached all kinds of production flexibility and reflexes thanks to its expanding machine park.

Adopting the principle of production in accordance with international quality and standards, **STOPER** continues its activities with the mission of short deadlines, the right price, and on-time delivery.

In accordance with expanding sector diversity and product portfolio, as of **2022**, it has decided to continue its production and marketing life by collecting the products it produces for the construction and architectural sectors under the name of:

### STOPER MİMARİ YAPI SİSTEMLERİ (STOPER ARCHITECTURAL BUILDING SYSTEMS) (SMS).

## MARKA PROFİLİ

**STOPER MİMARİ YAPI SİSTEMLERİ**'nin sektöre olan araştırmacı ve yenilikçi yaklaşımı, "**yaşam için faydalı fikirler**" sloganı ile yola çıkan, "**abi**" markasında vücut bulmuştur.

"**abi**", yaşam alanlarının kalitesini, konforunu ve estetiğini yükseltecek ürünler tasarlamak, geliştirmek ve insanlığın hizmetine sunmak amacıyla çalışır. Bununla beraber "**abi**" yüksek kalite ürün tedarigi ve uzun yıllara dayanan tecrübesi ile mimari ve inşaat sektörüne danışmanlık hizmeti vermektedir.

"**abi**", logosunda ifade edildiği gibi, mevcut bilgi birikimini mühendislik becerileri ile birleştirerek; yenilikçi, kaliteli, güvenilir, sürdürülebilir ve geri dönüştürülebilir değerlere sahip ürün ve hizmet kalitesini amaçlamaktadır.

"**abi**" yaşam için yenilikçi fikirler.

## BRAND PROFILE

**STOPER ARCHITECTURAL BUILDING SYSTEMS**'s investigative and innovative approach to the sector is embodied in the "**abi**" brand, which set out with the slogan "**innovative ideas for life.**"

"**abi**" works to design and develop products that will increase the quality, comfort, and aesthetics of living spaces and to offer them to the service of people. In addition, "**abi**" provides consultancy services to the architecture and construction sector with its high-quality product supply and long years of experience.

4

"**abi**", as expressed in its logo, by combining existing knowledge with engineering skills; aims innovative, high quality, reliable, sustainable, and recyclable values in product and service quality.

"**abi**", innovative ideas for life.





## VİZYONUMUZ

İnsanlığın yaşam alanlarının konfor ve estetiğini yükseltecek yenilikçi fikirler üreten ve bu fikirleri ürünleştiren global bir marka olmak.

## OUR VISION

To be a global brand that produces innovative ideas that will increase the comfort and aesthetics of people's living spaces and to convert these ideas to products.

## MİSYONUMUZ

Sahip olduğumuz uzun yıllara dayanan bilgi birikimimiz, deneyimimiz, genç ve dinamik mühendis kadromuz ve güçlü üretim parkurumuzla, insanların yaşam alanlarında konfor ve estetiğe, uygun koşullarda sağlayacağımız kaliteli hizmet ile ulaşmalarına olanak tanımak; Mimari ve inşaat sektöründe ürünlerimiz ile fark yaratmak.

## OUR MISSION

To enable people to reach comfort and aesthetics in their living spaces with quality service that we will provide under appropriate conditions, with our long years of knowledge, experience, young and dynamic engineer staff, and strong production track; To create a difference with our products in the architecture and construction industry.



## NEDEN BİZ?

"abi", 2000 yılından bu yana faaliyet gösteren firmamızın, global sektörde pazar payını arttırmak amacıyla kurduğu yeni markasıdır. Mimari Yapı Sistemleri alanında faaliyetlerini genişleten firmamız "abi" markası ile kısa süre içerisinde yerel sektörde ve uzun vadede global sektörde adından söz ettirmeyi amaçlamaktadır.

## BİLGİ BİRİKİMİ

"abi", yıllara uzanan malzeme bilgisi ve sistem serileri uzmanlığı ile belki de çok az sayıda firmanın elde edebileceği sektörel bir bilgi birikimine sahiptir. Bu bilgi birikimi ile müşterilerinden gelen farklı proje taleplerine danışmanlık hizmeti sunarak bir katma değer oluşturmaktadır. "abi" sadece kendi ürünleri için değil müşterilerinin projeleri için de konfor, estetik ve kaliteyi yükseltecek ve ulaşabilir kılacak yenilikçi faydalı fikirleri, müşterilerine bir hizmet olarak sunmayı bir görev edinir.

## MÜHENDİSLİK

"abi", "yaşam için faydalı fikirler" sloganını benimserken, bu sloganın altının doldurulması gerektiğinin farkındadır. Bunun için global sektör hareketlerini ve yeni ürünleri sürekli takip altında tutar. Eğitim "abi"nin vazgeçilmez bir parçasıdır. Genç ve dinamik mühendis ekibinin gelişmiş üretim teknolojilerine erişimini kolaylaştıracak yatırımlar yapan "abi", araştırma ve geliştirme faaliyetleri üzerine yoğunlaşarak bugün olduğu gibi, gelecekte de yaşam için faydalı fikirler üretecektir.

## YENİLİKÇİLİK

Sürekli olarak daha iyisine ulaşmak, bu düşüncüyü iş yaşamının bir parçası haline getirmek "abi" iş yapış biçiminin temel felsefesidir. Yenilikçi fikirlerin araştırma ve geliştirme faaliyetlerinin bir sonucu olduğunu bilen "abi" bu konuda sektörün öncüsü olmayı hedeflemektedir. "abi", mimari yapı sektörünün talep ettiği minimalist, fonksiyonel, yenilikçi ürünleri her zaman ilk olarak tasarlayıp, üreterek insanlığın kullanımına sunacaktır.

## KALİTE

"abi" müşteri beklentilerini, ihtiyaçlarını en iyi şekilde tespit ederek en yüksek kalite ile karşılamayı ve müşteri memnuniyetini arttırmayı kendine ilke edinmiştir.

## GÜVENİLİRLİK

"abi", geçmiş faaliyetleri ile kanıtlanmış, STOPER'den miras aldığı yüksek güven prensibini, bugün de en önemli değeri olarak sürdürmektedir. Müşterilerine sağladığı güven "abi" için vazgeçilmez bir sorumluluktur.

## SÜRDÜRÜLEBİLİRLİK

"abi" misyon ve vizyonu doğrultusunda hayat boyu sürdürülebilirlik ilkesini her zaman, her yerde savunur ve bu doğrultuda tasarım ve faaliyetlerini gerçekleştirir.

## SERVİS

"abi" ürettiği ve tasarladığı tüm ürünleri satış ve satış sonrası hizmetleri ile daima destekler ve bunu sürdürülebilirlik ilkesinden hiçbir zaman ayrı düşünmez. "abi" markası taşıyan her bir ürün şirketimiz garantisini altında olan bir değerdir.

## GERİ DÖNÜŞÜM

"abi" tasarladığı her değeri, çevre duyarlılığıyla malzemelendirir, üretir ve paketler. Tasarımından, kullanımına kadar olan her aşamada çevre bilinci "abi" felsefesinin vazgeçilmez bir parçasıdır.

## WHY US?

"abi" is the new brand name of our company, which has been operating since 2000, in order to increase its market share in the global sector. Our company, which has expanded its activities in the field of Architectural Building Systems, aims to make a well-known name for itself in the local sector in a short time and in the global sector in the long term with the brand "abi".

## KNOWLEDGE

"abi" has a sectoral knowledge that perhaps very few companies can obtain, with years of material knowledge and system series expertise. With this knowledge, it creates additional value by providing consultancy services to different project requests from its customers. "abi," not only for its own products but also for the projects of its customers, takes it as a duty to offer innovative useful ideas that will increase comfort, aesthetics, and quality and make it accessible as a service.

## ENGINEERING

"abi," while taking up the slogan "useful ideas for life," is aware that this slogan needs to be fulfilled. To do that, it keeps track of global sector movements and new products. Education is an indispensable part of "abi." Making investments to facilitate the access of the young and dynamic team of engineers to advanced production technologies, "abi" will concentrate on research and development activities and will produce useful ideas for life in the future as it is today.

## INNOVATION

The basic philosophy of "abi's" business style is to constantly achieve the better and to make this idea a part of business life. Knowing that innovative ideas are the result of research and development activities, "abi," in this regard, aims to be the pioneer of the sector. "abi" will always be in the first rank to design and produce the minimalist, functional, and innovative products demanded by the architectural construction industry and present them to the use of humanity.

## QUALITY

"abi" has adopted the principle of meeting customer expectations and needs with the highest quality by determining their needs in the best way and increasing customer satisfaction.

## RELIABILITY

"abi" maintains the high trust principle, which it inherited from STOPER, proven by past activities, as its most important value today. The trust that "abi" provides to its customers is its indispensable responsibility.

## SUSTAINABILITY

In line with its mission and vision, "abi" defends the principle of lifelong sustainability anytime, anywhere and carries out its designs and activities in this direction.

## SERVICE

"abi" always supports all the products it produces and designs with its sales and after-sales services and never considers it apart from the sustainability principle. Each product bearing the "abi" brand is a value under the guarantee of our company.

## RECYCLE

"abi" chooses materials, produces, and packages with environmental sensitivity while designing any value. Environmental awareness is an indispensable part of "abi" philosophy at every stage from its design to its use.



Dream it!  
Design it!  
Develop it!

## Giriş

2024 senesinin ilk üç aylık temasını 3xD yani "Dream it, Design it, Develop it" – (Hayal et, Tasarla ,Geliştir ) olarak belirledik. Hayal edelim.

## 35.22.019.001

Özellikle açılır serilerdeki en önemli konulardan birisi sistemin açılıp kapanmasına izin veren mekanizmalardır.

Sayfa :: 3

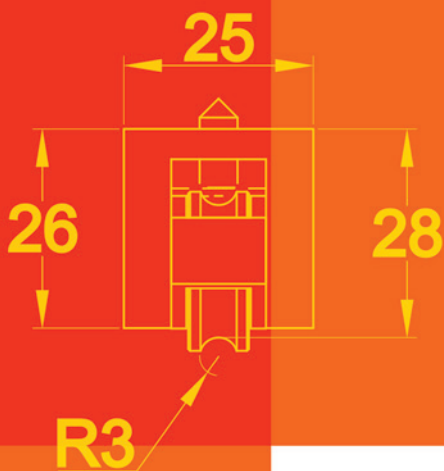
## 35.22.020.001

Alüminyum sistemlerdeki kol seçeneklerini arttırmakla kalmadık, çok zor olan kol montajını da kolaylaştırdık.

Sayfa :: 5

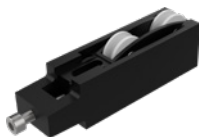
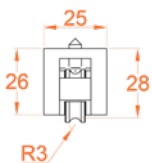


# RULMANLAR ROLLERS

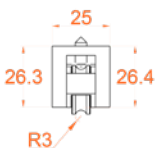


# 20

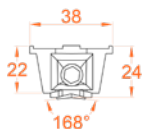
10.20.001.001



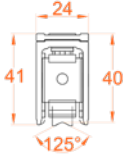
10.20.002.001



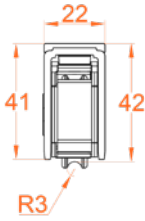
10.20.009.001



10.20.011.001

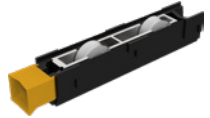
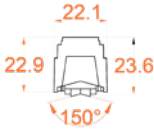


10.20.016.001

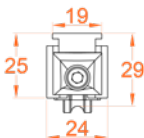


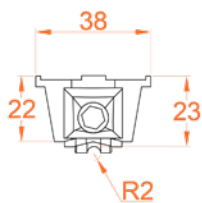
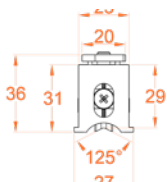
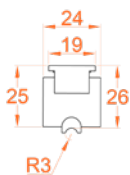
11

10.20.018.001



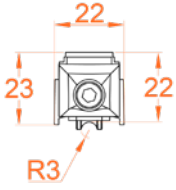
10.20.019.001



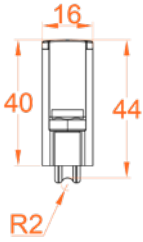
**10.20.023.001****10.20.038.001****35.20.002.001**



35.20.003.001



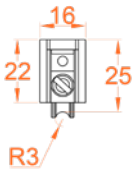
35.20.007.001

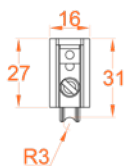


13

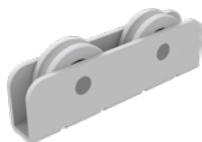
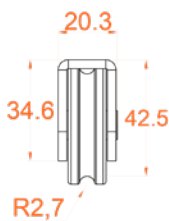


35.20.008.001

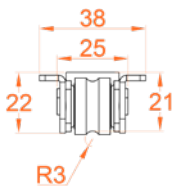


**35.20.009.001**

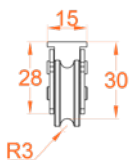
AYARLI KANAT RULMANLARI

**10.20.003.001**

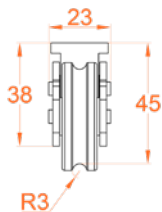
SABIT KANAT RULMANLARI / FIXED ROLLERS

**10.20.014.001**

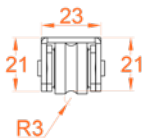
10.20.020.001

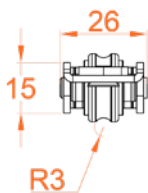
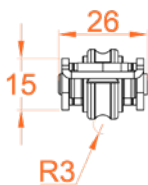


10.20.022.001

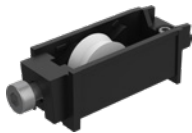
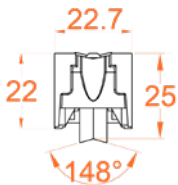


10.20.036.001

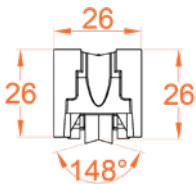


**35.20.001.001****35.20.005.001****35.20.006.001**

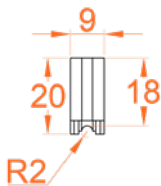
10.20.006.001

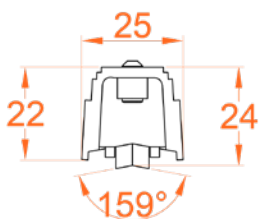
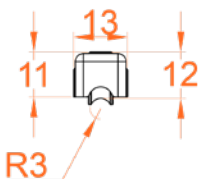
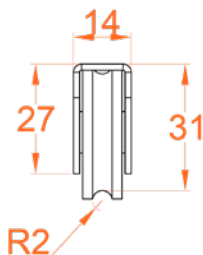


10.20.034.001

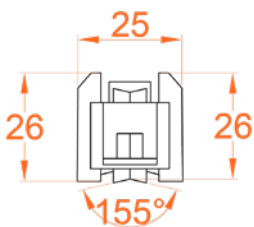


10.20.015.001

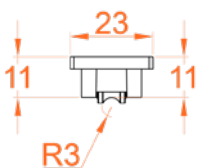


**10.20.026.001****10.20.027.001****10.20.032.001**

10.20.033.001

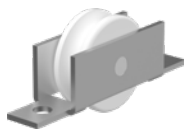
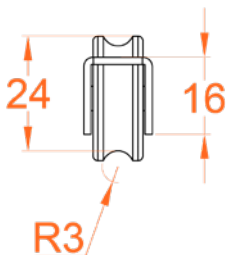


10.20.037.001



19

35.20.004.001



## AYARLI KANAT RULMANLARI / ADJUSTABLE ROLLERS

Ürün Bilgisi Product Info	Gövde Body	Ayar Adjustment	Teker Wheel	Teker Sayısı Number of Wheels	Çap (Ø mm) Diameter	Yük Kapasitesi Load Capacity	Renk Colour
10.20.001.001	plastic	+3/-3 mm	plastic	2	20	40 kg/2 rollers	black
10.20.002.001	plastic	+3/-3 mm	metal	2	20	50 kg/2 rollers	black
10.20.009.001	plastic	no	plastic	2	20.5	60 kg/2 rollers	black
10.20.011.001	metal	+3/-3 mm	plastic	2	35	175 kg/2 rollers	metallic gray
10.20.016.001	metal	+2,5/-2,5 mm	plastic	2	38	200 kg/2 rollers	metallic gray
10.20.018.001	plastic	+1,5/-1,5 mm	plastic	2	21.5	75 kg/2 rollers	black
10.20.019.001	plastic	+1,5/-1,5 mm	plastic	2	27	130 kg/2 rollers	black
10.20.023.001	plastic	no	plastic	2	23	75 kg/2 rollers	black
10.20.038.001	metal	+2,5/-2,5 mm	plastic	2	30	150 kg/2 rollers	metallic gray
35.20.002.001	plastic	+2/-2 mm	plastic	2	24	100 kg/2 rollers	black
35.20.003.001	plastic	+2/-2 mm	plastic	2	30.3	75 kg/2 rollers	black
35.20.007.001	metal	+3/-3 mm	plastic	2	34.5	100 kg/2 rollers	metallic gray
35.20.008.001	metal	+3/-3 mm	plastic	2	24	90 kg/2 rollers	metallic gray
35.20.009.001	metal	+3/-3 mm	plastic	2	29	150 kg/2 rollers	metallic gray

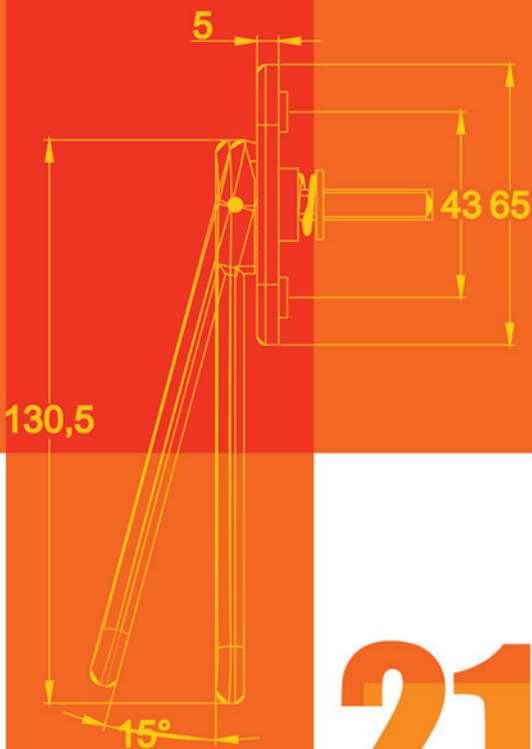


SABİT KANAT RULMANLARI / FIXED ROLLERS

Ürün Bilgisi Product Info	Gövde Body	Ayar Adjustment	Teker Wheel	Teker Sayısı Number of Wheels	Çap (Ø mm) Diameter	Yük Kapasitesi Load Capacity	Renk Colour
10.20.003.001	metal	no	plastic	2	40	200 kg/2 rollers	white
10.20.014.001	metal	no	metal	4	20	250 kg/2 rollers	metallic gray
10.20.020.001	metal	no	plastic	2	25.6	120 kg/2 rollers	metallic gray
10.20.022.001	metal	no	plastic	2	40	175 kg/2 rollers	metallic gray
10.20.036.001	metal	no	plastic	2	20	125 kg/2 rollers	metallic gray
35.20.001.001	no	no	metal	1	22.2	100 kg/2 rollers	metallic gray
35.20.005.001	metal	no	plastic	2	21	125 kg/2 rollers	metallic gray
35.20.006.001	metal	no	plastic	2	20	250 kg/2 rollers	metallic gray

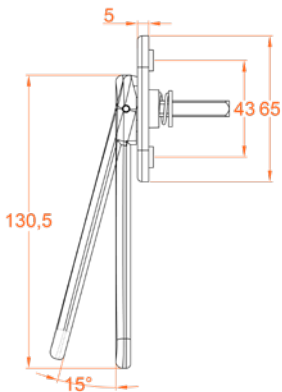
AYARLI SİNEKLİK RULMANLARI / ADJUSTABLE FLYSCREEN ROLLERS							
Ürün Bilgisi Product Info	Gövde Body	Ayar Adjustment	Teker Wheel	Teker Sayısı Number of Wheels	Çap (Ø mm) Diameter	Yük Kapasitesi Load Capacity	Renk Colour
10.20.006.001	plastic	+2/-2 mm	plastic	1	21	25 kg/2 rollers	black
10.20.034.001	plastic	no	plastic	1	21	15 kg/2 rollers	black
SABİT SİNEKLİK RULMANLARI / FIXED FLYSCREEN ROLLERS							
Ürün Bilgisi Product Info	Gövde Body	Ayar Adjustment	Teker Wheel	Teker Sayısı Number of Wheels	Çap (Ø mm) Diameter	Yük Kapasitesi Load Capacity	Renk Colour
10.20.015.001	plastic	no	plastic	1	18	10 kg/2 rollers	black
10.20.026.001	plastic	no	plastic	1	20.5	25 kg/2 rollers	black
10.20.027.001	plastic	no	plastic	2	11.5	15 kg/2 rollers	black
10.20.032.001	metal	no	plastic	1	32.2	40 kg/2 rollers	metallic gray
10.20.033.001	plastic	no	plastic	1	22.8	15 kg/2 rollers	black
10.20.037.001	plastic	no	plastic	2	10	10 kg/2 rollers	black
35.20.004.001	metal	no	plastic	1	25.5	15 kg/2 rollers	metallic gray

# KOLLAR HANDLES

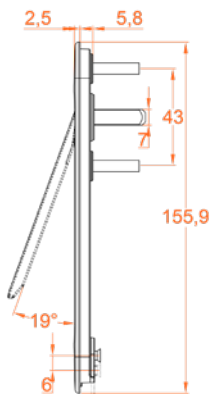


# 21

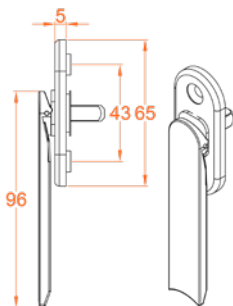
**10.21.001.001**



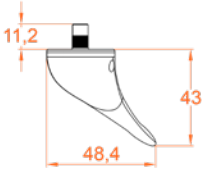
**10.21.008.001**



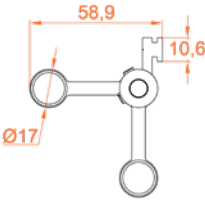
**35.21.002.001**



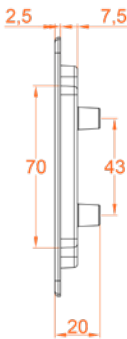
10.21.002.001



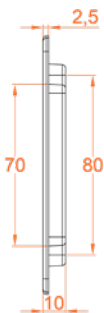
10.21.004.001



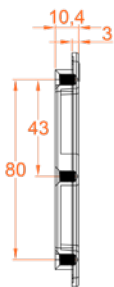
10.21.014.001



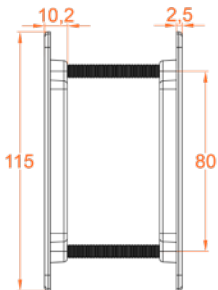
**10.21.015.001**

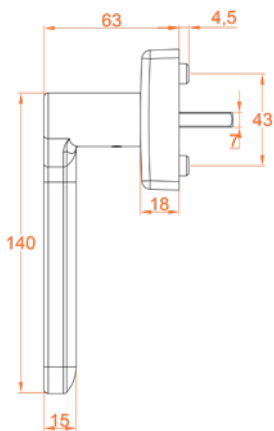


**35.21.004.001**

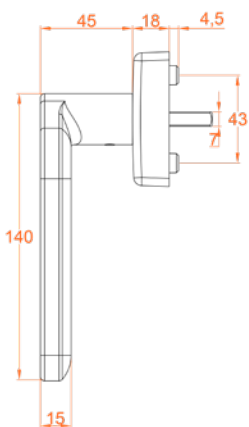


**35.21.008.002**

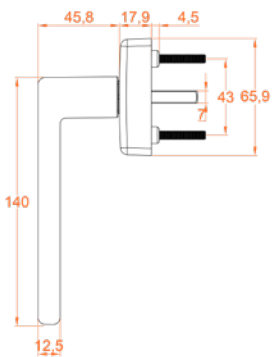




10.21.016.001

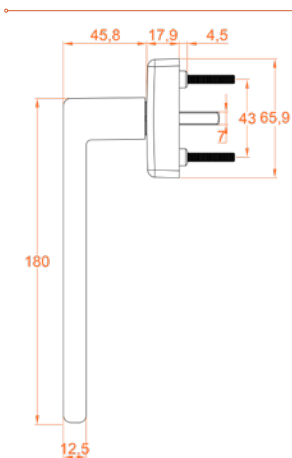


10.21.021.001

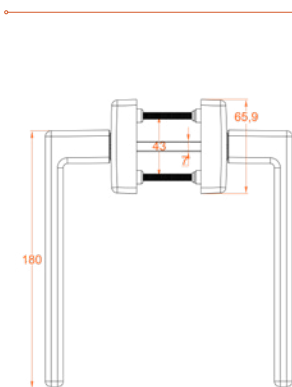


10.21.023.001

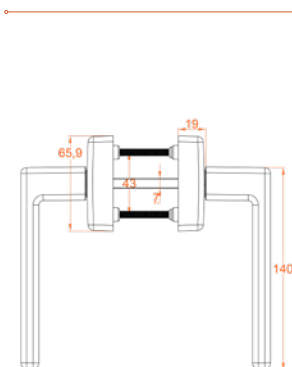




**10.21.026.001**



**35.21.005.002**

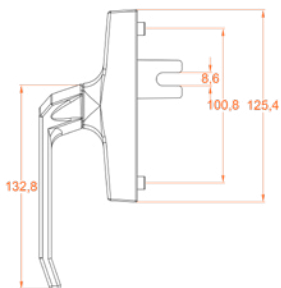


**35.21.006.002**

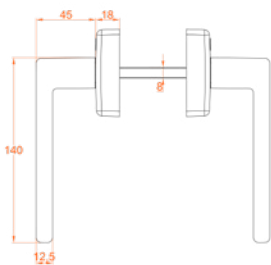




**35.21.007.002**



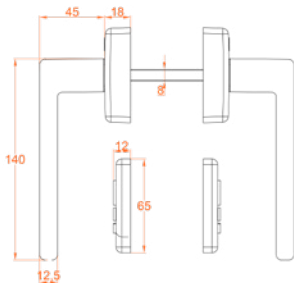
**10.21.024.001**



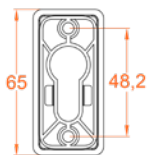
29



**10.21.028.001**

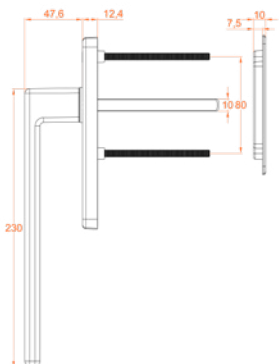


10.21.029.001



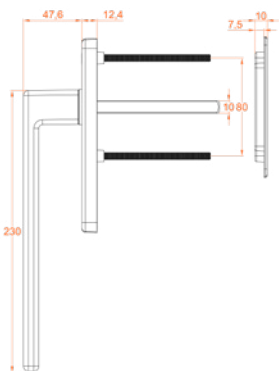
KAPI KOLLARI / DOOR HANDLES

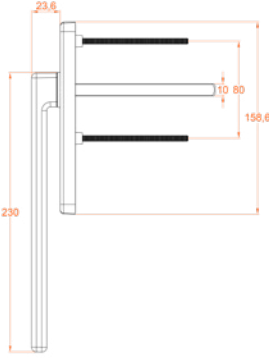
10.21.025.001



HBSB KOLLAR / HBSB HANDLES

10.21.027.001





abisms.com

**ORANGE  
PAGES**

No 01, Ocak 2024

advanced  
beneficial  
ideas

Sizlerle her ay  
buluşturmaya çalıştığımız  
abiNEWS'e bir de ORANGE  
PAGES yani TURUNCU  
SAYFALAR'ı ekledik.

**ORANGE PAGES  
sadece ve sadece  
 faydalı bilgiler  
 veren tamame  
 sektöre yönelik  
 sayfa olacak**



BASIK KOLLAR / RECESSED HANDLES									
Ürün bilgisi Product Info	Kol Sapı Handle Type	Kol Aynası Handle Body	Pim Tipi(mm) Pin Type	Çalışma Açları(°) Working Angle	Kol Aksı(mm) Handle Axle	Sap Uzunluğu(mm) Handle Length	Renk Colour		
10.21.001.001	zamak	zamak	7	full	43	130	painted		
10.21.008.001	zamak	zamak	7	full	43	100	painted		
35.21.002.001	zamak	zamak	7	full	43	96	painted		
ÇEKME KOLLAR / PULL HANDLES									
Ürün bilgisi Product Info	Kol Sapı Handle Type	Kol Aynası Handle Body	Pim Tipi(mm) Pin Type	Çalışma Açları(°) Working Angle	Kol Aksı(mm) Handle Axle	Sap Uzunluğu(mm) Handle Length	Renk Colour		
10.21.002.001	aluminium	-	-	-	220	242	painted		
10.21.004.001	aluminium	aluminium	-	-	30+30	90	painted		
ARKALIKLAR / PULL HANDLES									
Ürün bilgisi Product Info	Kol Sapı Handle Type	Kol Aynası Handle Body	Pim Tipi(mm) Pin Type	Çalışma Açları(°) Working Angle	Kol Aksı(mm) Handle Axle	Sap Uzunluğu(mm) Handle Length	Renk Colour		
10.21.014.001	aluminium	-	-	-	43	115	painted		
10.21.015.001	aluminium	-	-	-	80	115	painted		
35.21.004.001	aluminium	-	-	-	43-80	104	painted		
35.21.008.001	aluminium	-	-	-	80	115	painted		

KIVRIK KOLLAR / LEFT-RIGHT HANDLES									
Ürün bilgisi Product Info	Kol Sapı Handle Type	Kol Aynası Handle Body	Pim Tipi(mm) Pin Type	Çalışma Açılı(°) Working Angle	Kol Aksı(mm) Handle Axle	Sap Uzunluğu(mm) Handle Length	Renk Colour		
10.21.016.001	aluminium	aluminium	7	0-90-180	43	140	painted		
10.21.021.001	aluminium	aluminium	7	0-90-180	43	140	painted		
KLASİK KOLLAR \ CLASSICAL HANDLES									
Ürün bilgisi Product Info	Kol Sapı Handle Type	Kol Aynası Handle Body	Pim Tipi(mm) Pin Type	Çalışma Açılı(°) Working Angle	Kol Aksı(mm) Handle Axle	Sap Uzunluğu(mm) Handle Length	Renk Colour		
10.21.023.001	aluminium	aluminium	7	0-90-180	43	140	painted		
10.21.026.001	aluminium	aluminium	7	0-90-180	43	180	painted		
35.21.005.002	aluminium	aluminium	7	0-90-180	43	180	painted		
35.21.005.002	aluminium	aluminium	7	0-90-180	43	140	painted		
35.21.007.002	aluminium	aluminium	Maçalı	0-90-180	100	135	painted		

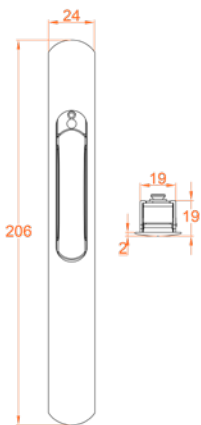
KAPI KOLLARI / DOOR HANDLES									
Ürün bilgisi Product Info	Kol Sapı Handle Type	Kol Aynası Handle Body	Pim Tipi(mm) Pin Type	Çalışma Açılımları(°) Working Angle	Kol Aksı(mm) Handle Axle	Sap Uzunluğu(mm) Handle Length	Renk Colour		
10.21.024.001	aluminium	aluminium	8	automatic	43	140	painted		
10.21.028.001	aluminium	aluminium	8	automatic	43	140	painted		
HBSB KOLLAR / HBSB HANDLES									
Ürün bilgisi Product Info	Kol Sapı Handle Type	Kol Aynası Handle Body	Pim Tipi(mm) Pin Type	Çalışma Açılımları(°) Working Angle	Kol Aksı(mm) Handle Axle	Sap Uzunluğu(mm) Handle Length	Renk Colour		
10.21.025.001	aluminium	aluminium	10	0-180	80	230	painted		
10.21.027.001	aluminium	aluminium	10	0-180	80	230	painted		
35.21.003.001	aluminium	aluminium	10	0-180	80	230	painted		

# MEKANİZMALAR MECHANISMS

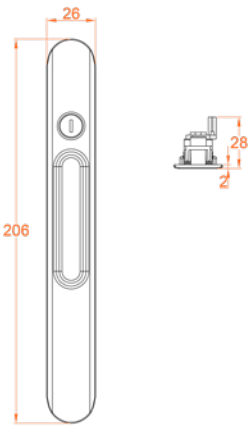


# 22

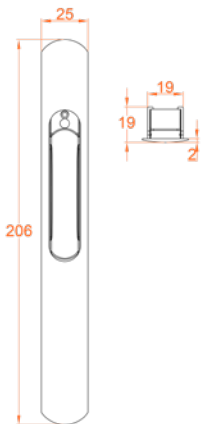
10.22.001.001



10.22.002.001

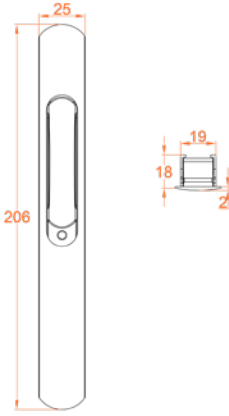


10.22.003.001

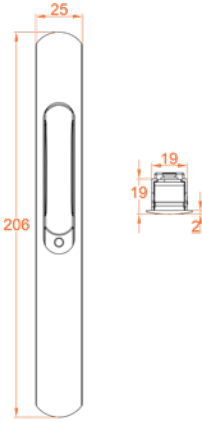




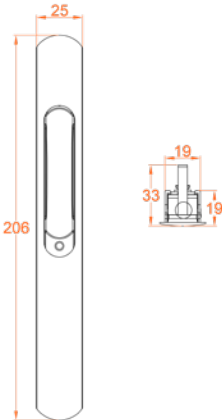
**35.22.003.001**



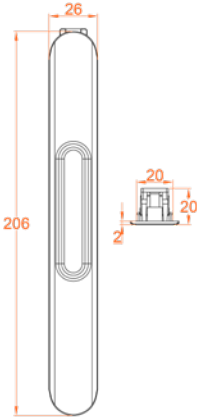
**35.22.007.001**



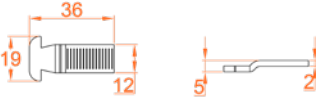
**35.22.023.002**



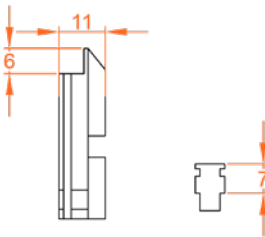
**35.22.024.001**



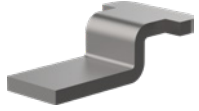
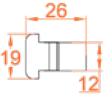
**10.22.004.001**



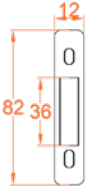
**10.22.005.001**



10.22.011.001



10.22.012.001



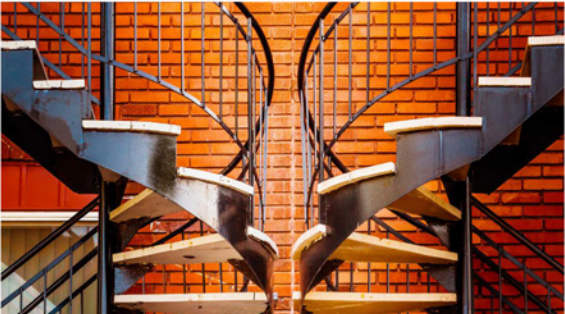
abisms.com

**ORANGE  
PAGES**

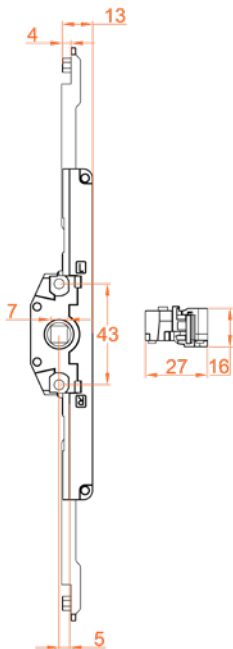
No 02, Şubat 2024



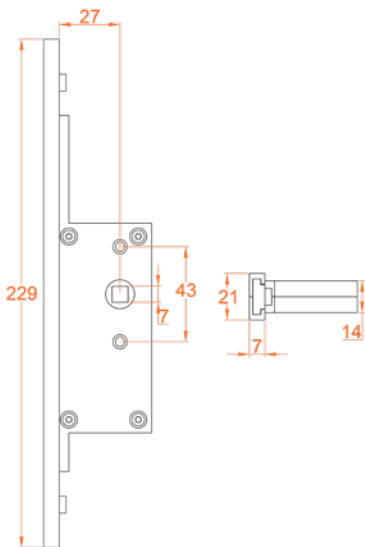
advanced  
beneficial  
ideas



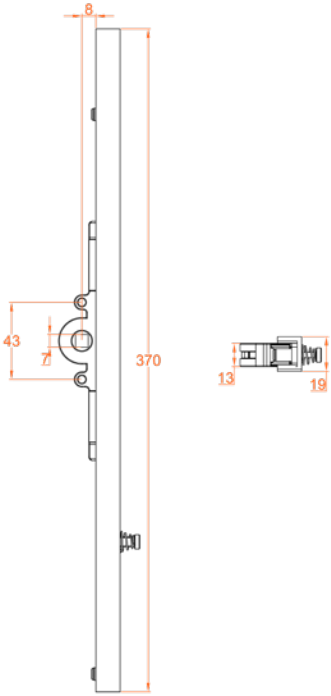
10.22.013.001



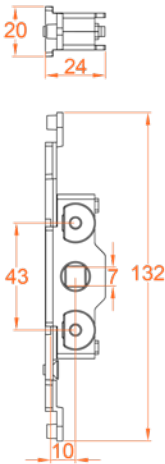
10.22.014.001



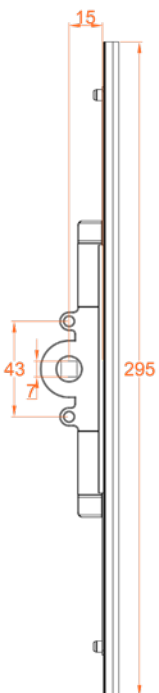
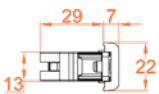
10.22.019.002



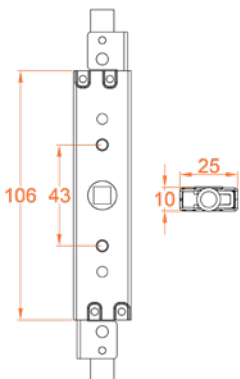
35.22.001.001



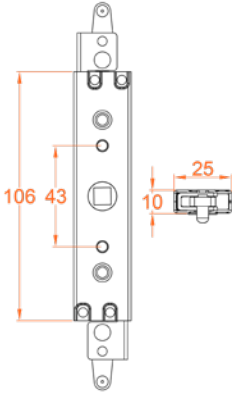
**35.22.002.001**



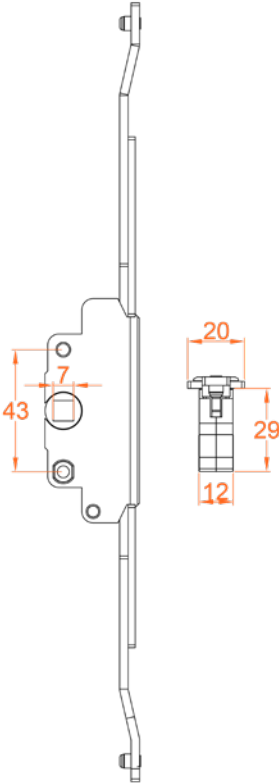
**35.22.009.001**

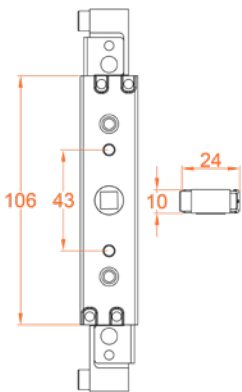
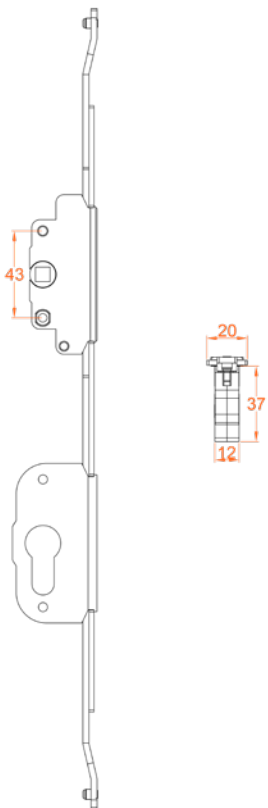


35.22.010.001

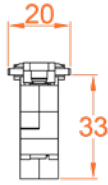
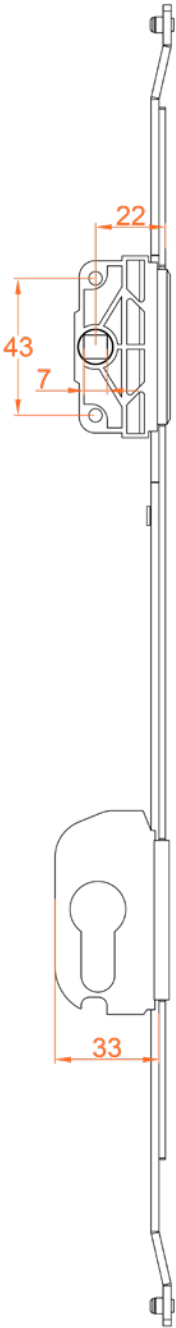


35.22.019.001

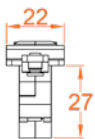
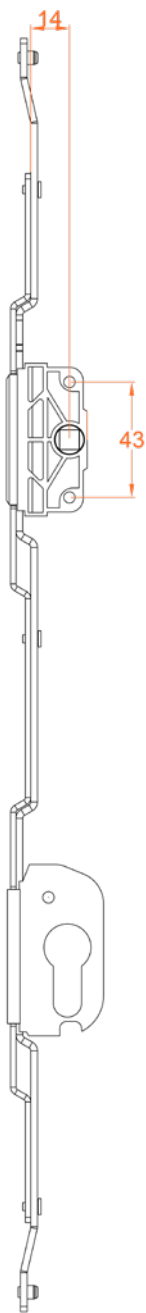


**35.22.021.001****35.22.020.001**

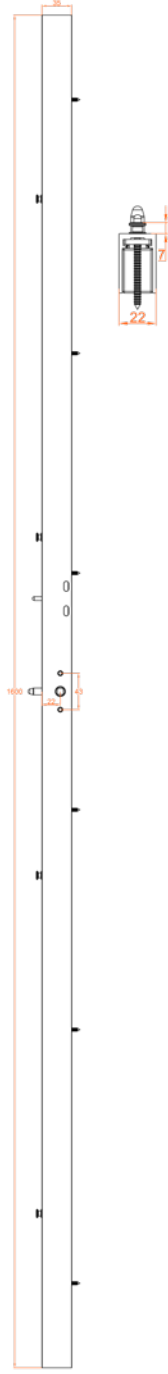




35.22.029.001



BARELLİ GEARBOX MEKANİZMALAR / GEARBOX MECHANISM WITH CYLINDER



10.22.038.001



ÜRÜN KODU	ÜRÜN BOYU	KİLİTLEME NOKTASI
10.22.038.001	1,6 M	2
10.22.038.002	1,2 M	2
10.22.038.003	2,0 M	4

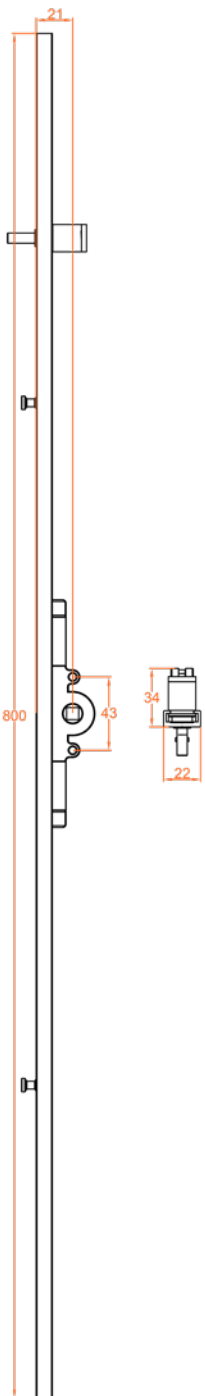


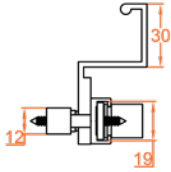
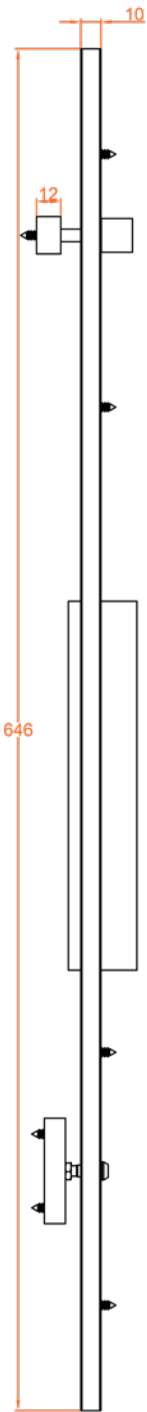
## İSPANYOLETLER / ESPAGNOLETTE'S

ÜRÜN KODU	ÜRÜN BOYU	KILITLEME NOKTASI
35.22.017.001	1,6 M	4
35.22.022.001	0,8 M	2

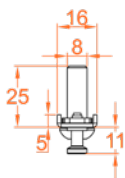
8
7
6
5
4
3
2
1

35.22.022.001





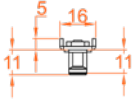
35.22.026.001



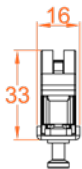
DÜZ YÜZEY PVC KANAL VE EURO KANAL UYUMLU İSPANYOLETLER

FLAT SURFACE ESPAGNOLETTE FOR PVC AND EURO CHANNEL

35.22.027.001



35.22.028.001



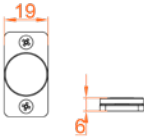
DÜZ YÜZEY PVC KANAL VE EURO KANAL UYUMLU İSPANYOLETLER



10.22.015.001



10.22.017.001



10.22.020.001

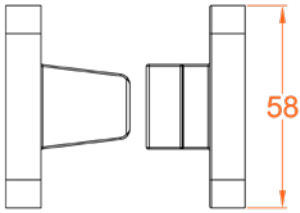
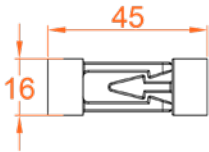


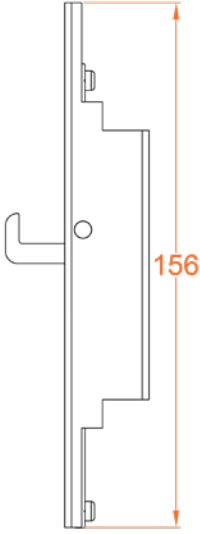
10.22.025.001



KATLANIR SİSTEM MEKANİZMALARI / FOLDING SYSTEM MECHANISM

10.22.032.001

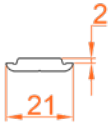
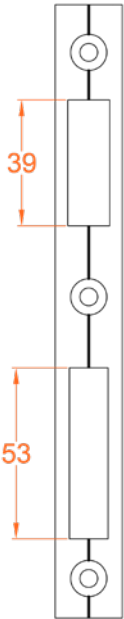




35.22.030.001

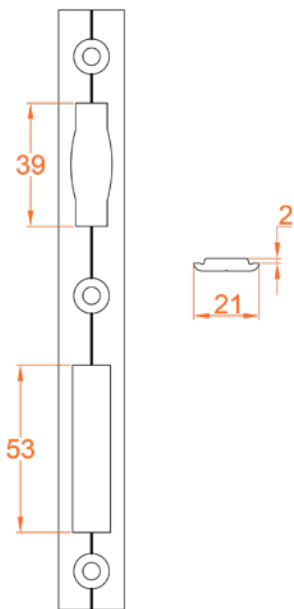


55

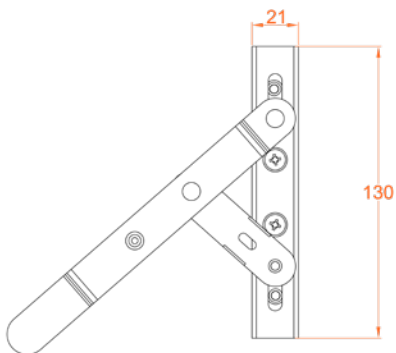


10.22.009.001

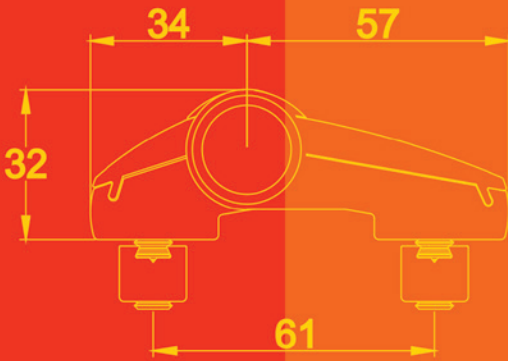


**10.22.010.001**

DİĞER MEKANİZMALAR / OTHER MECHANISMS

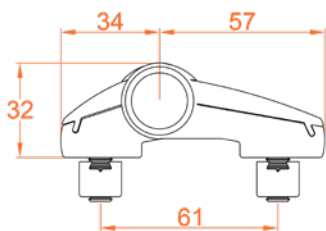
**35.22.013.001**

## MENTEŞELER HINGES

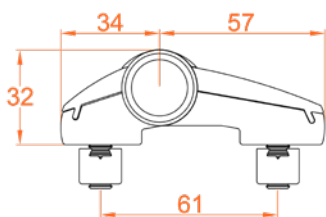


# 23

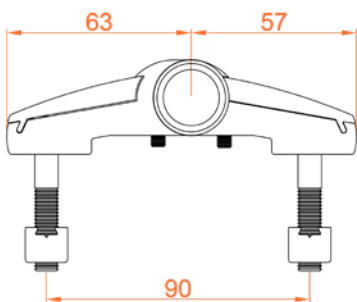
10.23.001.001



10.23.002.001



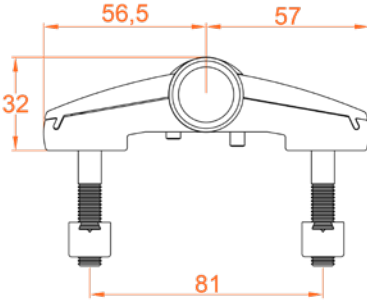
10.23.005.001



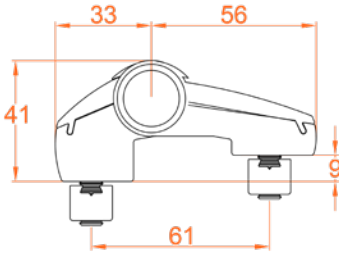
HEMİYÜZ KAPI MENTEŞELERİ / FLAT SURFACES DOOR HINGES



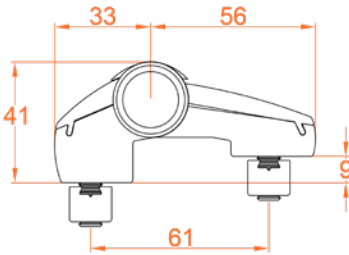
10.23.032.001



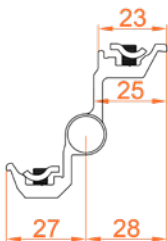
10.23.003.001



10.23.004.001

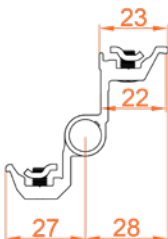


**10.23.007.001**

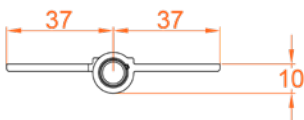


PENCERE MENTEŞESİ / WINDOW HINGES

**35.23.002.001**



**10.23.008.001**

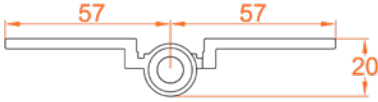


KATLANIR SİSTEM MENTEŞELERİ

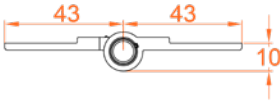




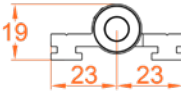
10.23.011.001



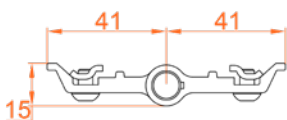
10.23.014.001



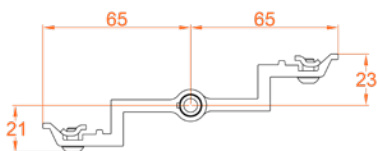
10.23.019.001



10.23.039.001



35.23.001.001



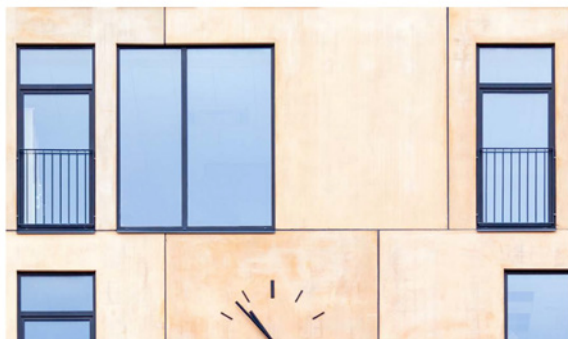
abisms.com

**ORANGE  
PAGES**

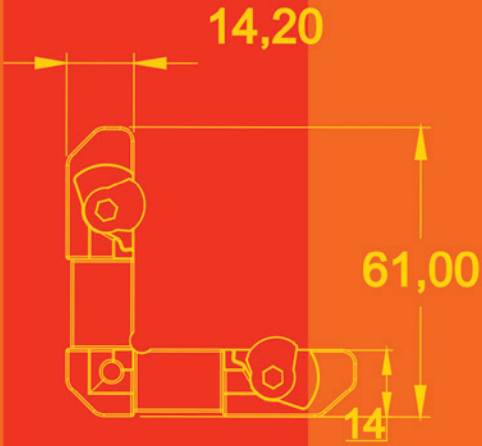
No 03, Mart 2024



advanced  
beneficial  
ideas

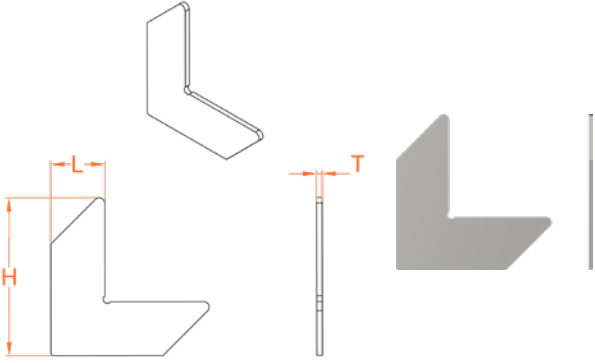


# KÖŞE BAĞLANTILARI CORNER JOINTS

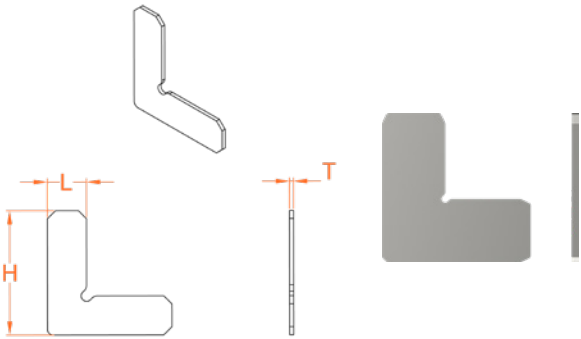


# 24

**TYPE 1**



**TYPE 2**

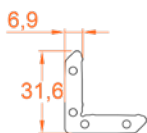


Ürün Bilgisi Product Info	Malzeme Material	Ürün Tipi Product Type	H (mm)	L (mm)	T (mm)
10.24.001	*optional	type 1	49,5	12	0,8-1-1,2-1,5-2-3
10.24.002	*optional	type 1	58	19,8	0,8-1-1,2-1,5-2-3
10.24.003	*optional	type 1	50	13,8	0,8-1-1,2-1,5-2-3
10.24.004	*optional	type 1	48,8	14,9	0,8-1-1,2-1,5-2-3
10.24.005	*optional	type 1	49	10,9	0,8-1-1,2-1,5-2-3
10.24.006	*optional	type 2	40	13	0,8-1-1,2-1,5-2-3
10.24.007	*optional	type 1	57,7	20,6	0,8-1-1,2-1,5-2-3
10.24.008	*optional	type 1	48	12,8	0,8-1-1,2-1,5-2-3
10.24.011	*optional	type 1	51,9	17,8	0,8-1-1,2-1,5-2-3
10.24.015	*optional	type 1	30	10,6	0,8-1-1,2-1,5-2-3
10.24.016	*optional	type 1	53,4	16,8	0,8-1-1,2-1,5-2-3
10.24.017	*optional	type 1	58,6	21,8	0,8-1-1,2-1,5-2-3
10.24.018	*optional	type 1	60,8	23	0,8-1-1,2-1,5-2-3
10.24.019	*optional	type 1	59	20,8	0,8-1-1,2-1,5-2-3
10.24.022	*optional	type 1	52	17,8	0,8-1-1,2-1,5-2-3
10.24.024	*optional	type 1	50,4	16	0,8-1-1,2-1,5-2-3
10.24.025	*optional	type 1	63,2	25	0,8-1-1,2-1,5-2-3
10.24.027	*optional	type 1	36	9,6	0,8-1-1,2-1,5-2-3
10.24.028	*optional	type 2	45,6	14,35	0,8-1-1,2-1,5-2-3
10.24.029	*optional	type 2	35,5	8,1	0,8-1-1,2-1,5-2-3
10.24.030	*optional	type 2	44,65	18,4	0,8-1-1,2-1,5-2-3
10.24.031	*optional	type 1	29,6	10	0,8-1-1,2-1,5-2-3
10.24.035	*optional	type 2	60	25,5	0,8-1-1,2-1,5-2-3
10.24.037	*optional	type 1	31,3	6,9	0,8-1-1,2-1,5-2-3
10.24.044	*optional	type 2	34,7	17,3	0,8-1-1,2-1,5-2-3
10.24.048	*optional	type 1	51,9	17,8	0,8-1-1,2-1,5-2-3
10.24.051	*optional	type 1	63,2	25	0,8-1-1,2-1,5-2-3

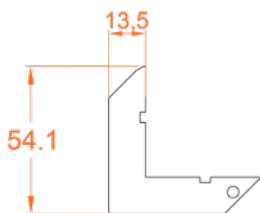
10.24.010



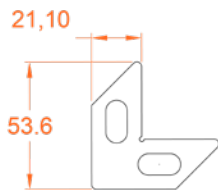
10.24.012



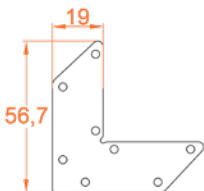
10.24.013



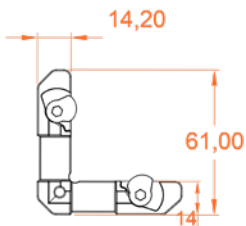
10.24.036



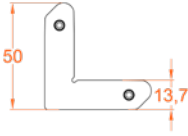
10.24.039



10.24.014

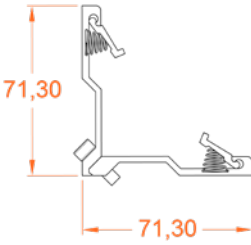


35.24.001.001



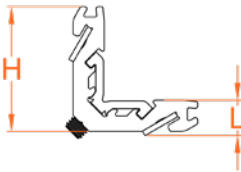
CORNER JOINTS WITH MECHANISM

10.24.020



KÖŞE TAKOZLARI / MOUNTING CORNER JOINTS

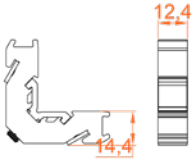
10.24.046.001



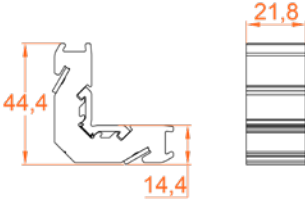
Ürün Bilgisi (Product Info)	Malzeme (Material)	H (mm)	L (mm)	T (mm)
10.24.046.001	Aluminium+metal	36	10.5	14.2
10.24.046.002	Aluminium+metal	36	10.5	26.9
10.24.046.003	Aluminium+metal	36	10.5	17.8



10.24.063.001



35.24.003.001



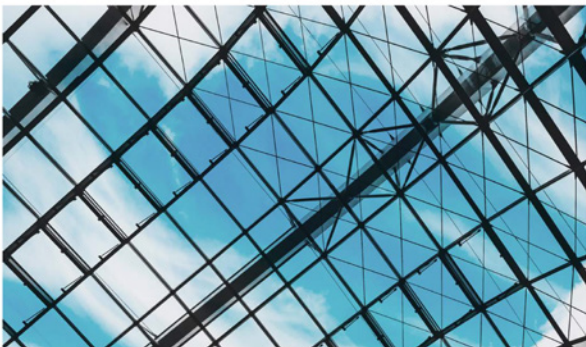
abisms.com

**ORANGE  
PAGES**

No 04, NİSAN 2024



advanced  
beneficial  
ideas





## Giriş

Hayatımızın her alanında var olan hesaplama aşlında yaptığımız planların, kuruların ve tasarımların gerçekleşmesi için çok önemli bir görev üstlenmektedir.

METAL KILIFLI GÖMME RULMAN

Page :: 3

UZUN BOYUNLU EURO KANAL YAPRAK MENTEŞE

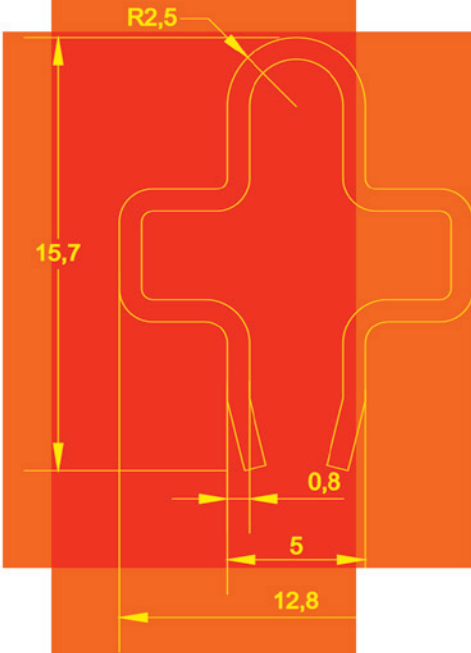
Page :: 5

EURO KANAL SIKMALI MENTEŞE

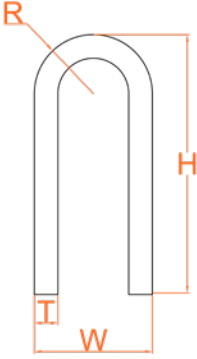
Page :: 7



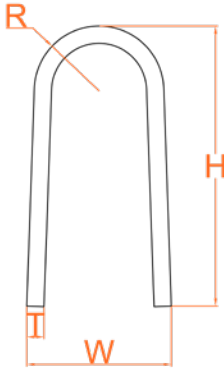
# ÇELİK RAYLAR STEEL RAILS



# 25

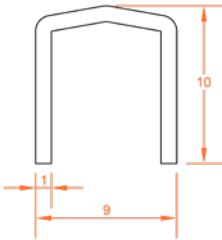
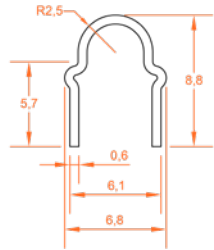
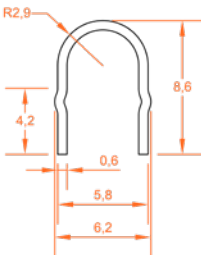
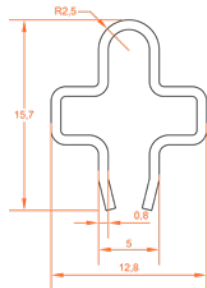


Ürün Bilgisi / Product Info	R (mm)	H (mm)	W (mm)	T (mm)
10.25.001	2.5	7.3	5.0	0.8
10.25.002	2.5	8.3	5.0	0.8
10.25.003	2.5	9.0	5.0	0.8
10.25.004	2.5	9.8	5.0	0.8
10.25.005	2.5	10.7	5.0	0.8
10.25.006	2.5	12.0	5.0	0.8
10.25.007	2.5	12.5	5.0	0.8
10.25.011	2.6	7.2	5.2	1.2
10.25.021	2.7	5.2	5.4	0.8
10.25.023	2.5	11.0	5.0	1.0
10.25.024	2.3	8.8	4.6	0.5
10.25.025	2.7	9.0	5.4	0.5
10.25.027	2.6	8.3	5.0	0.5
10.25.028	2.5	7.3	5.0	0.5
10.25.029	2.4	10.5	4.8	0.6
10.25.032	2.5	14.0	5.0	1.0
10.25.037	2.5	13.2	5.3	0.8

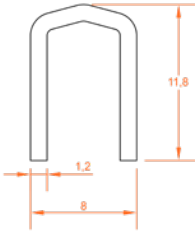
**TYPE 2**

Ürün Bilgisi / Product Info	R (mm)	H (mm)	W (mm)	T (mm)
10.25.014	2.5	16.20	5.70	0.8
10.25.015	2.5	13.00	5.70	0.8
10.25.019	3	13.00	5.70	0.8
10.25.020	2.5	9.60	6.30	0.8

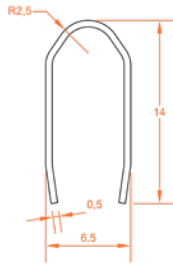
73

**TYPE 3****10.25.008****10.25.009****10.25.010****10.25.012**

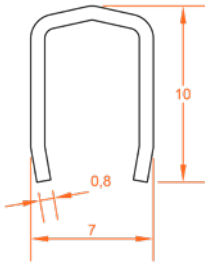
10.25.013



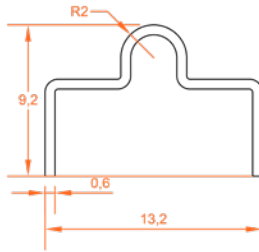
10.25.016



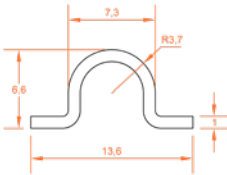
10.25.017



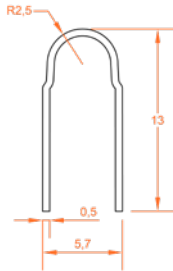
10.25.018



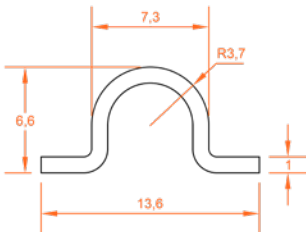
10.25.022



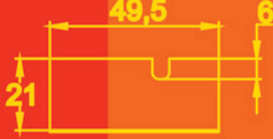
10.25.025



10.25.033



# İZOLASYON ÜRÜNLERİ PLUGS



# 26



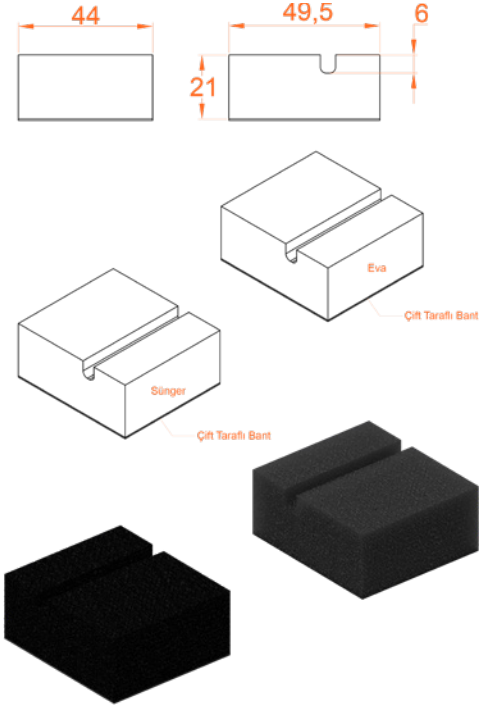
info	material	type	L1 (mm)	L2 (mm)	H (mm)	T (mm)
10.26.001	Sünger	type 1	173.5	130.5	22	34.5
10.26.002	Sünger	type 1	140	100	20	25
10.26.003	Sünger	type 1	140	100	20	35
10.26.004	Sünger	type 1	130	90	20	33
10.26.006	Sünger	type 1	146	96	19	27.9
10.26.009	Sünger	type 1	140	100	14	50
10.26.012	Sünger	type 1	140	95	20.5	39
10.26.016	Sünger	type 1	200	160	14	35
10.26.021	Sünger	type 1	142.5	90.5	20	35
10.26.028	Sünger	type 1	140	110	18	20
10.26.031	Sünger	type 1	140	100	12	38
10.26.043	Sünger	type 1	200	110	18	40
10.26.060	Sünger	type 1	140	100	20	37
10.26.061	Sünger	type 1	140	100	15	34
10.26.062	Sünger	type 1	140	100	15	30
10.26.063	Sünger	type 1	140	100	15	27
10.26.064	Sünger	type 1	140	100	15	39
10.26.065	Sünger	type 1	140	100	20	27
10.26.070	Sünger	type 1	95	45	35	35
10.26.072	Sünger	type 1	140	100	10	49
10.26.075	Sünger	type 1	200	110	20	42
10.26.076	Sünger	type 1	200	110	18	29.5
10.26.077	Sünger	type 1	140	50	30	30
10.26.078	Sünger	type 1	120	80	15	15
10.26.079	Sünger	type 1	120	80	10	37
10.26.080	Sünger	type 1	240	150	35	58
10.26.081	Sünger	type 1	185	100	20	40
10.26.083	Sünger	type 1	239.4	150	35	40
10.26.085	Sünger	type 1	226.3	150	20	40
10.26.086	Sünger	type 1	142.5	89	10	30
10.26.087	Sünger	type 1	125	80	20	25
10.26.090	Sünger	type 1	120	80	15	27.6





ürün bilgisi product info	malzeme material	ürün tipi product type	L1 (mm)	L2 (mm)	H (mm)	T (mm)
10.26.005	Epdm	type 2	96	-	19	27.9
10.26.007	Epdm	type 2	110	-	27	25
10.26.008	Sert Sünger	type 2	120	-	35	24
10.26.010	Epdm	type 2	120	-	20	35
10.26.013	Epdm	type 2	105	-	17.5	39
10.26.015	Epdm	type 2	105	-	22	27
10.26.017	Epdm	type 2	160	-	12	35
10.26.020	Epdm	type 2	120	-	22	35
10.26.022	Epdm	type 2	60	-	17	28
10.26.024	Epdm	type 2	60	-	16	33
10.26.025	Epdm	type 2	60	-	16	36
10.26.026	Epdm	type 2	60	-	20	35
10.26.027	Epdm	type 2	100	-	12	50
10.26.030	Epdm	type 2	140	-	13.9	37.6
10.26.044	Epdm	type 2	60	-	16.5	16.5
10.26.058	Epdm	type 2	90	-	13	38
10.26.067	Epdm	type 2	45	-	10	34
10.26.068	Epdm	type 2	120	-	18.5	35
10.26.069	Epdm	type 2	120	-	13	35
10.26.071	Epdm	type 2	120	-	17	35
10.26.073	Epdm	type 2	100	-	26	15
10.26.088	Sünger	type 2	40	-	23	23
10.26.091	Epdm	type 2	80	-	15	27.6

## Type 3 -10.26.018



abisms.com

# ORANGE PAGES

No 05, MAYIS 2024

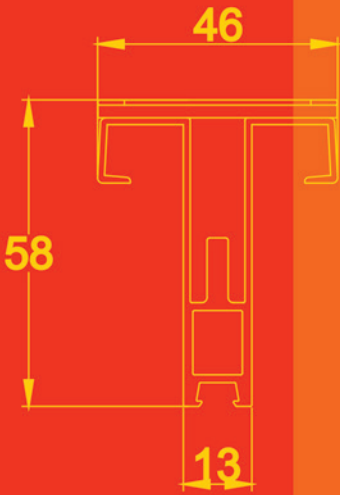


advanced  
beneficial  
ideas



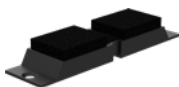
## SİİPMELER

# PLASTİKLER PLASTICS

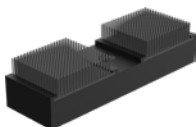


# 27

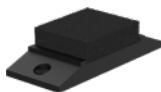
**10.27.001.001**



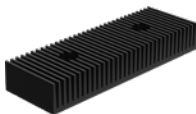
**10.27.026.001**

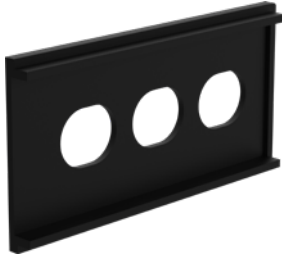


**10.27.057.001**

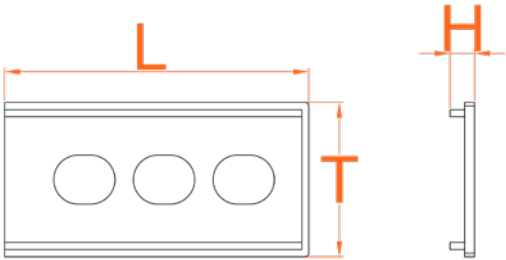


**35.27.055.001**

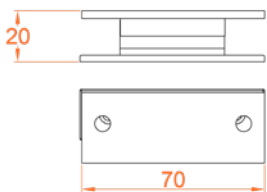




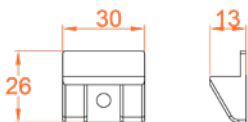
ürün bilgisi product info	malzeme material	H (mm)	T (mm)	L (mm)
10.27.002.001	TPV	8	50	50
10.27.003.001	TPV	8	50	82
10.27.004.001	TPV	8	50	100
10.27.005.001	TPV	8	50	120
10.27.006.001	TPV	8	50	140
10.27.007.001	TPV	8	50	160
10.27.008.001	TPV	8	60	50
10.27.009.001	TPV	8	60	135
10.27.010.001	TPV	8	60	150
10.27.011.001	TPV	8	60	90
10.27.012.001	TPV	8	60	180
10.27.013.001	TPV	8	60	235
10.27.021.001	TPV	8	50	180
10.27.047.001	TPV	8	60	100



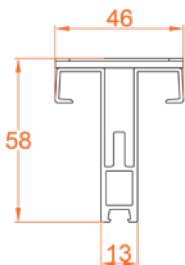
**10.27.015.001**



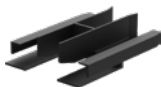
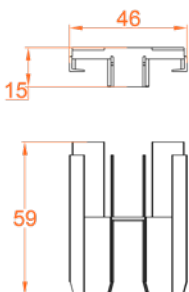
**10.27.016.001**



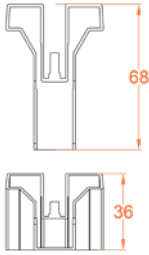
**35.27.035.001**



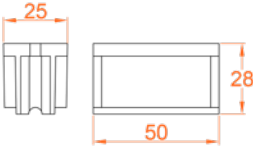
**35.27.016.001**



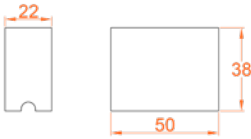
**35.27.036.001**



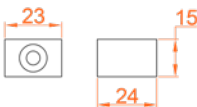
**10.27.017.001**



**10.27.049.001**



**35.27.001.001**

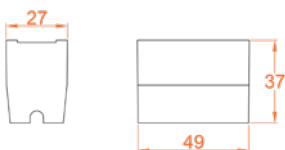


**35.27.017.001**



SABİTLEME TAKOZLARI / FIXING PARTS

**35.27.046.001**

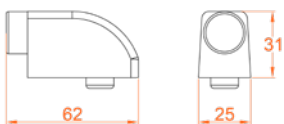


**10.27.019.001**



STOPERLER / STOPPERS

**10.27.024.001**





10.27.048.001

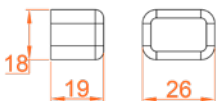


10.27.056.001

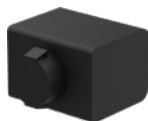
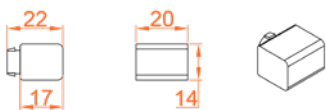


85

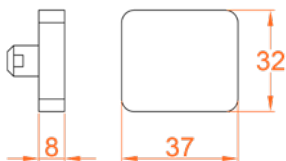
35.27.012.001



35.27.013.001

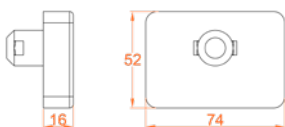


**35.27.033.001**

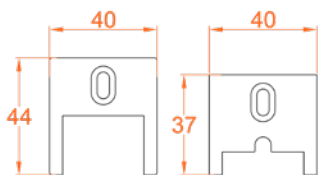


STOPERLER / STOPPERS

**35.27.045.001**

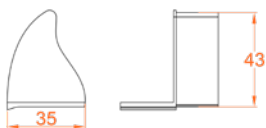


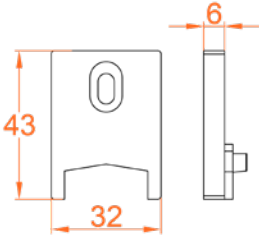
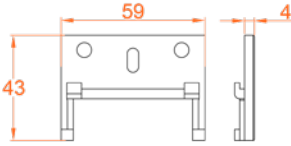
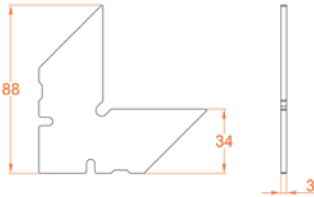
**10.27.039.001**



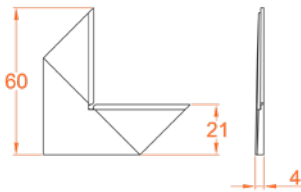
SÜRME KAPAKLAR / ADAPTER CAPS

**35.27.027.001**

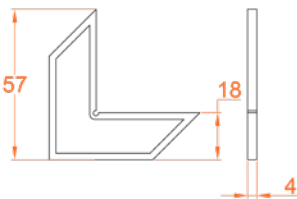


**35.27.039.001****35.27.044.001****35.27.014.001**

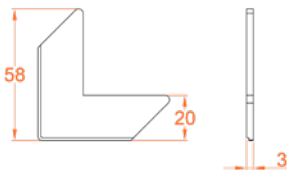
**35.27.037.001**



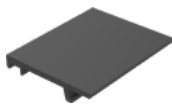
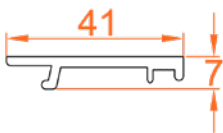
**35.27.051.001**



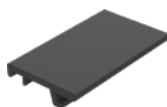
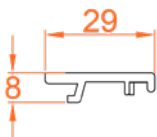
**35.27.052.001**



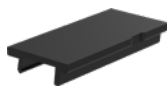
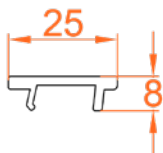
**35.27.005.001**



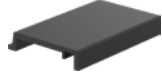
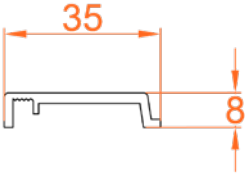
**35.27.006.001**



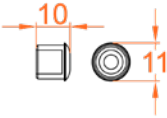
**35.27.009.002**



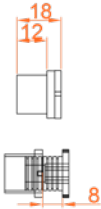
**35.27.019.001**



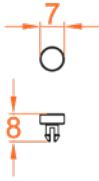
**10.27.022.001**



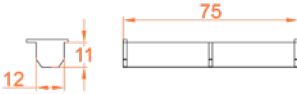
**10.27.034.001**



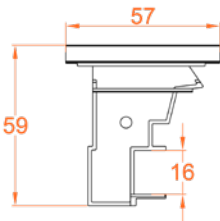
10.27.035.001



35.27.002.001



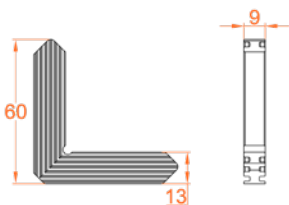
35.27.007.001



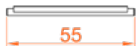
**35.27.026.001**



**35.27.054.001**



**35.27.057.001**

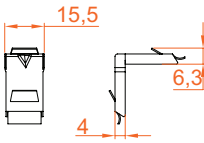
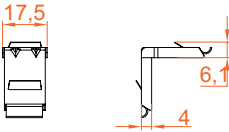
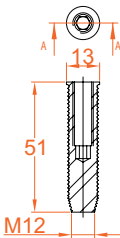


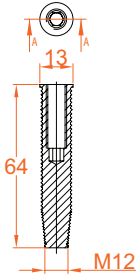
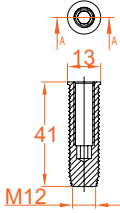
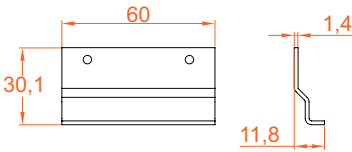


**METALLER  
METALLIC PARTS**

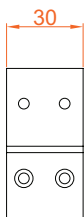
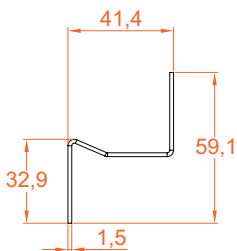


**28  
29**

**10.28.001.001****10.28.002.001****10.28.003.001**

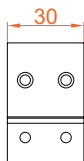
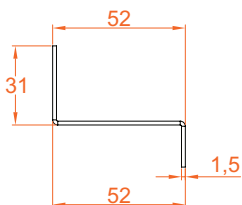
**10.28.004.001****10.28.005.001****10.28.012.001**

**35.28.001.001**

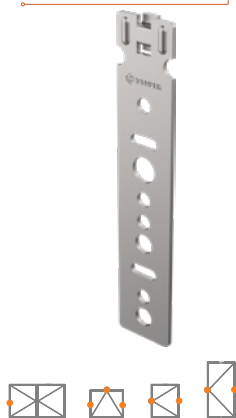
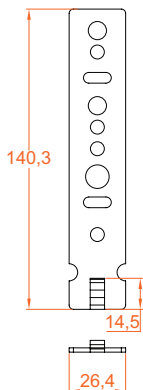


CAM VE KANAT TUTUCULAR / GLASS AND SASH SUPPORT PARTS

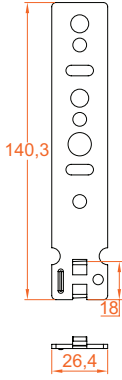
**35.28.002.001**



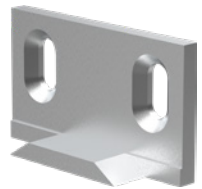
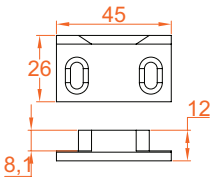
**10.28.030.001**



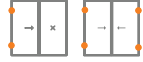
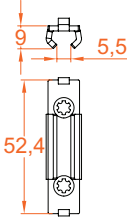
DOĞRAMA TUTUCULAR / FRAME SUPPORT PARTS

**35.28.004.001****10.28.008.001**

97

**10.29.001.001**

35.28.005.001



DİĞER METALLER / OTHER METALLIC PARTS

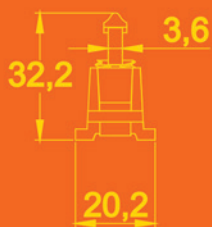
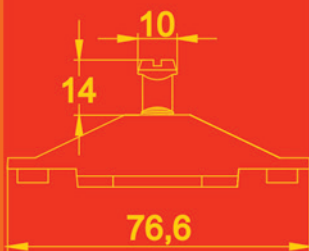
abisms.com

**ORANGE  
PAGES**

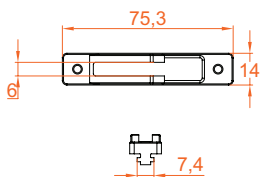
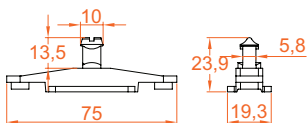
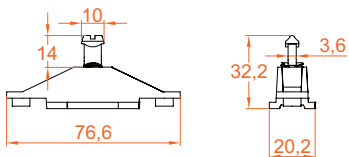
No 06, HAZİRAN 2024

advanced  
beneficial  
ideas

# ZAMAKLAR ZAMAKS

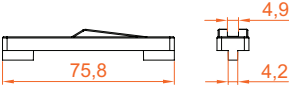


# 30

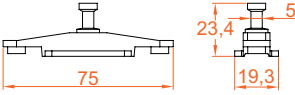
**10.30.001.001****10.30.009.001****10.30.010.001**



**10.30.011.001**

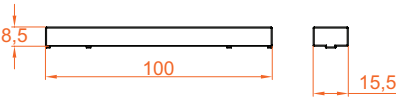


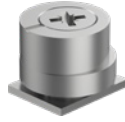
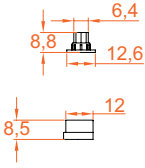
**10.30.012.001**



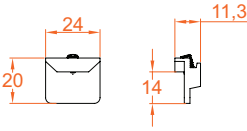
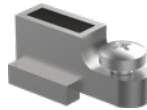
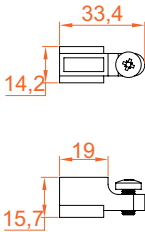
101

**35.30.002.001**



**10.30.002.001**

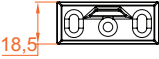
AÇILIR SİSTEMLERDE KULLANILAN ZAMAKLAR / HINGE SYSTEM ZAMAKS

**10.30.004.001****10.30.003.001**CEPHE SİSTEMLERİNDE KULLANILAN ZAMAKLAR  
FACEDE SYSTEM ZAMAKS

10.30.005.001



10.30.007.001



103



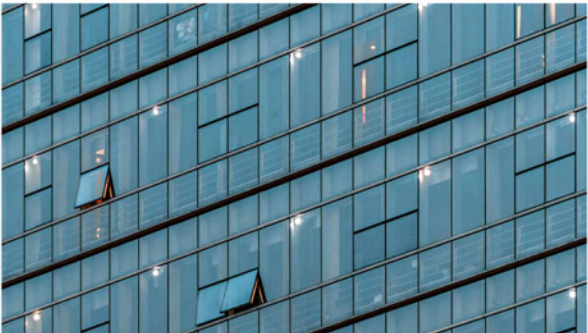
abisms.com

**ORANGE  
PAGES**

No 07, TEMMUZ 2024



advanced  
beneficial  
ideas





## Giriş

İmalat kapasitesi gelişmiş, imalat yeteneği gelişmiş sanayi toplumları her zaman ilerlemeye açık, yeniliklere açık bilgi birikimleri ilerlemiş toplumlar olurlar ki bu da bu toplumları her zaman dinamik kılan en önemli öge olmaktadır.

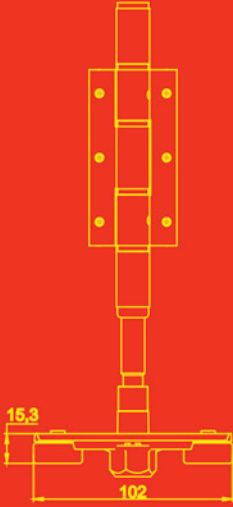
90° KOL HAREKETLİ 22 AKS BARELLİ GÖBEK MEKANİZMA

ÇİFT TARAFLI SÖRME KOL :: 5

BAREL ROZETİ :: 7

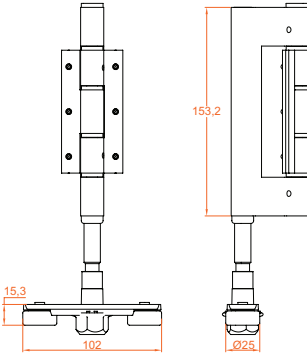


# ÜSTTEN TAŞIMALI ARABALAR TOP TRUCKS

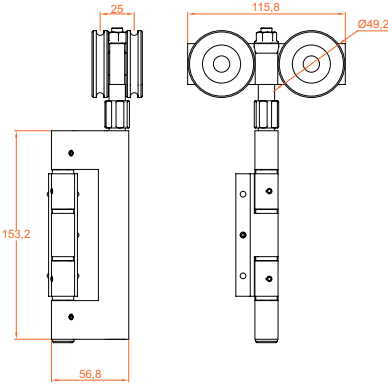


# 31

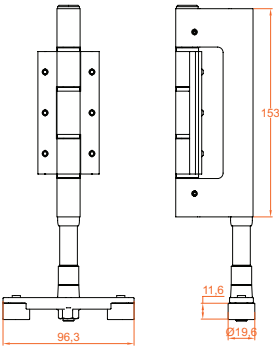
10.31.049.001



10.31.050.001



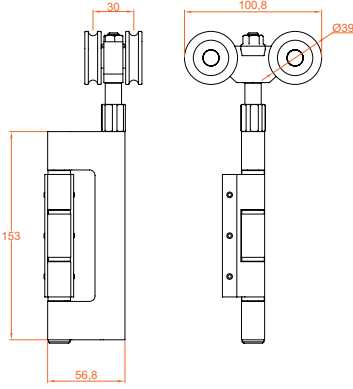
10.31.002.001



AĞIR YÜKE DAYANIKLI ARABALAR / HEAVY-DUTY TRUCKS (XL)

ORTA-AĞIR YÜKE DAYANIKLI ARABALAR  
MIDDLE-HEAVY-DUTY TRUCKS (L)

ORTA-AĞIR YÜKE DAYANIKLI ARABALAR  
MIDDLE-HEAVY-DUTY TRUCKS (L)



10.31.003.001



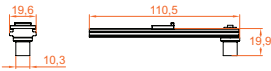
10.31.051.001



107



10.31.052.001

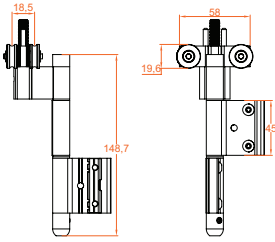


ÜSTTEN TAŞIMALI ARABALAR / TOP TRUCKS



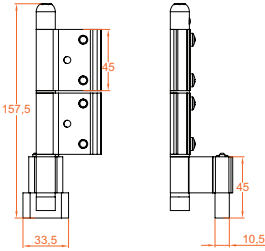
HAFIF YÜKE DAYANIKLI ARABALAR / LIGHT-DUTY TRUCKS (M)

**10.31.053.001**

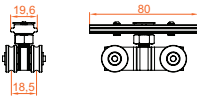


HAFIF YÜKE DAYANIKLI ARABALAR / LIGHT-DUTY TRUCKS (M)

**10.31.054.001**



**35.31.001.001**



SÜRME TAŞIMALI ARABALAR / SLIDING TRUCKS





abisms.com

**ORANGE  
PAGES**

No 08, AĞUSTOS 2024



advanced  
beneficial  
ideas



**ÖZEL SİSTEMLER  
BÖLÜM II**

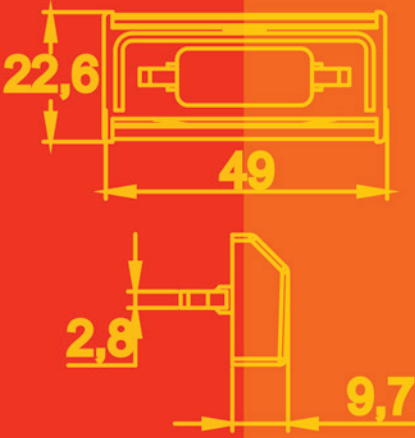


## Giriş

Bizler de günlük hayatımızda hep taslaklar oluşturarak, ön çalışmalar yaparak yaşamaktayız. Yapacağımız alışverişler için bile oturup hazırladığımız alışveriş listelerinde karalayıp çizdiğimiz nice ürün varken sonradan aklımıza gelen birçok ilave üründe bulunmaktadır.

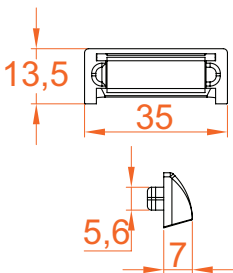


**YAĞMUR  
TAHLİYE  
KAPAKLARI  
DRAINAGES**

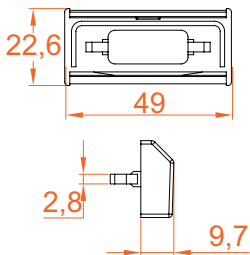


**32**

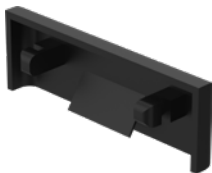
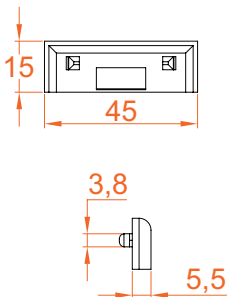
10.32.001.001



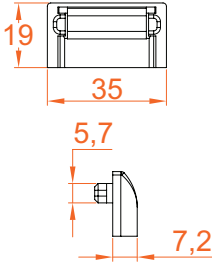
10.32.002.001



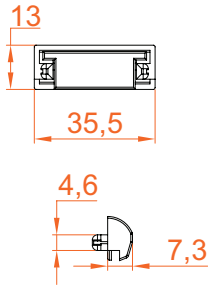
10.32.003.001



10.32.005.001

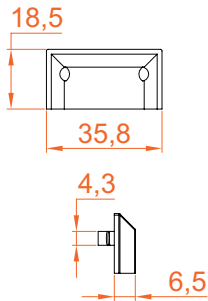


10.32.006.001

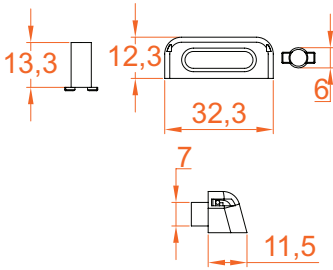


113

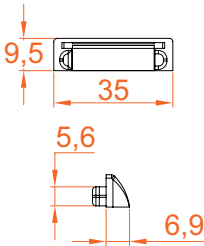
10.32.009.001



10.32.010.001



35.32.001.001



abisms.com

**ORANGE  
PAGES**

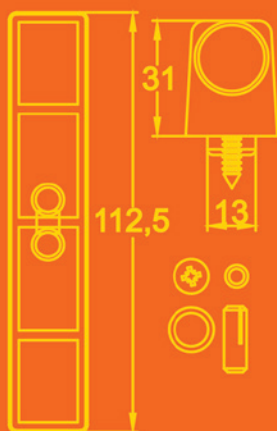
No 09, EYLÜL 2024



advanced  
beneficial  
ideas

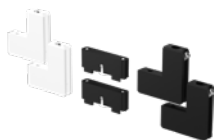
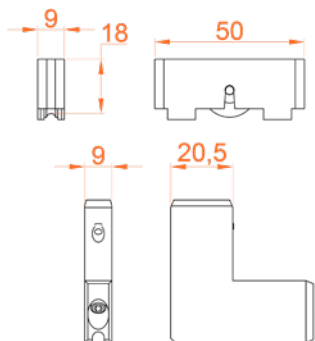


## SETLER SETS



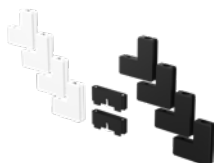
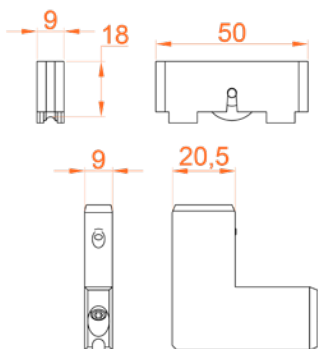
# 33

**10.33.001.001**

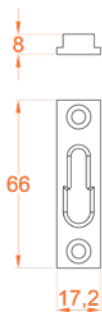


SİNEKLİK SETLERİ / FLYSCREEN SASH SET

**10.33.001.002**



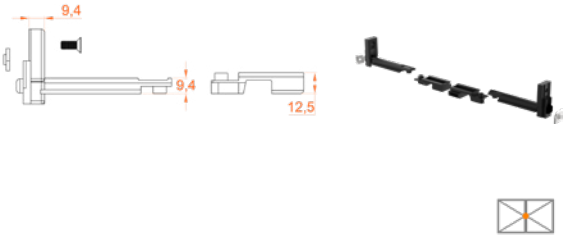
**10.33.003.001**



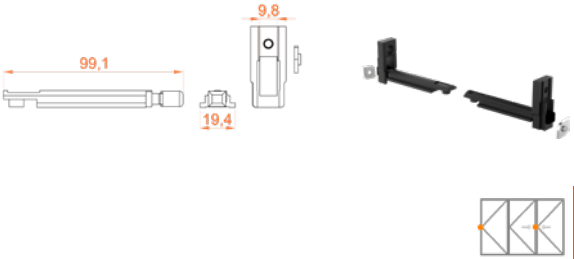
KİLİTLEME SETLERİ / LOCKING SETS



**10.33.005.001**

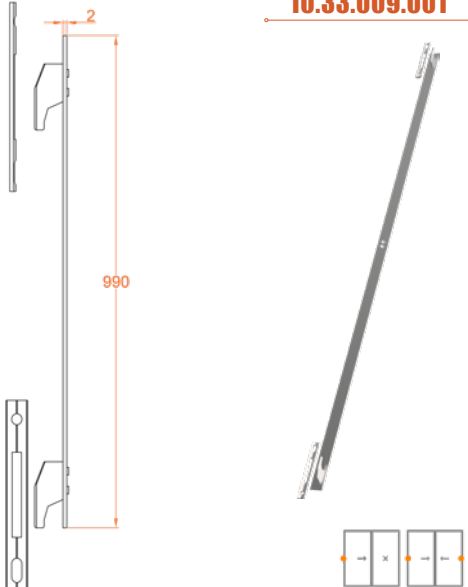


**10.33.007.001**

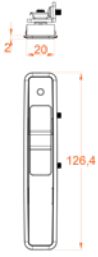


117

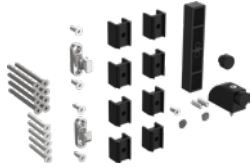
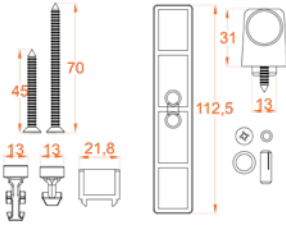
**10.33.009.001**



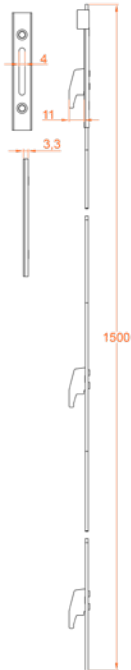
**35.33.001.001**



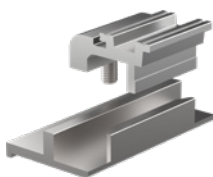
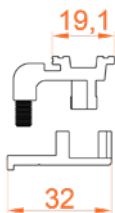
**35.33.010.001**



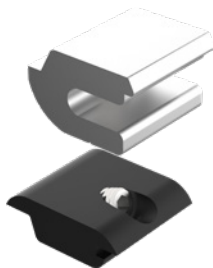
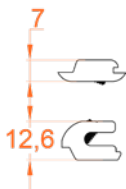
**10.33.010.001**



**10.33.004.001**



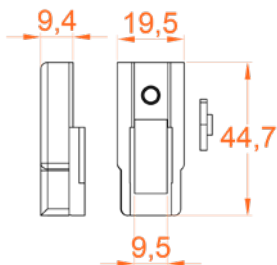
**10.33.006.001**



119



**10.33.008.001**

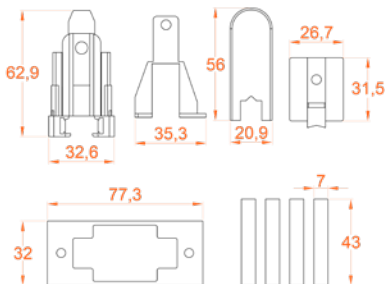


**10.33.011.001**



KANAT SETLERİ / SASH SETS

**10.33.013.001**

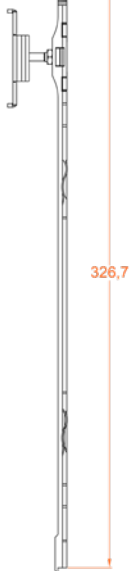


**35.33.002.001**



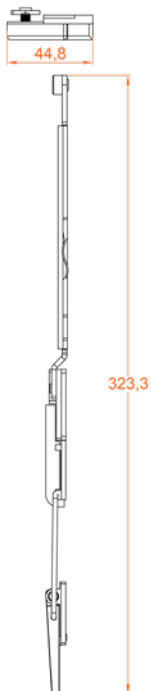
İSPANYOLET SETLERİ / ESPAGNOLETTE SETS

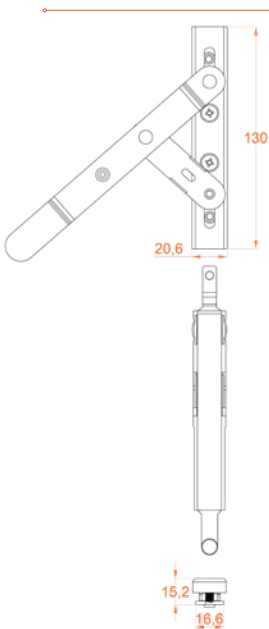
**35.33.003.001**



121

**35.33.006.001**

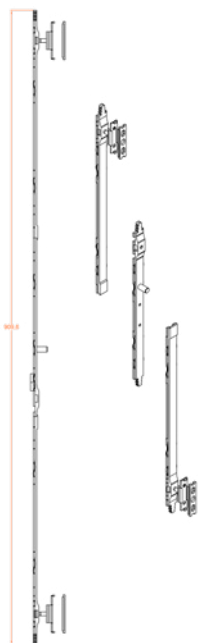




**35.33.007.001**

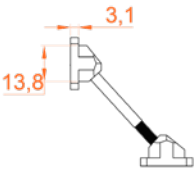


ISPANYOLET SETLERI / ESPAGNOLETTE SETS

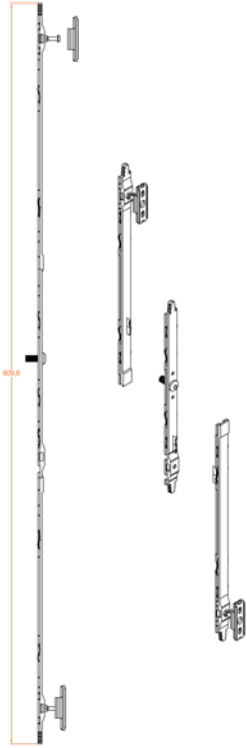


**35.33.008.001**



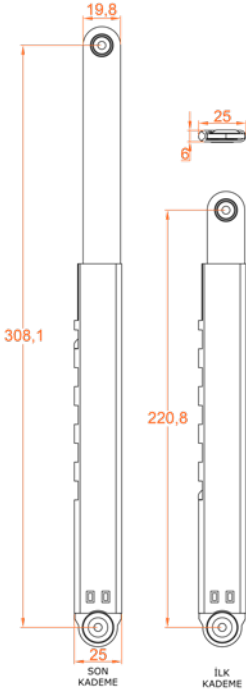


**35.33.011.001**



**35.33.012.001**





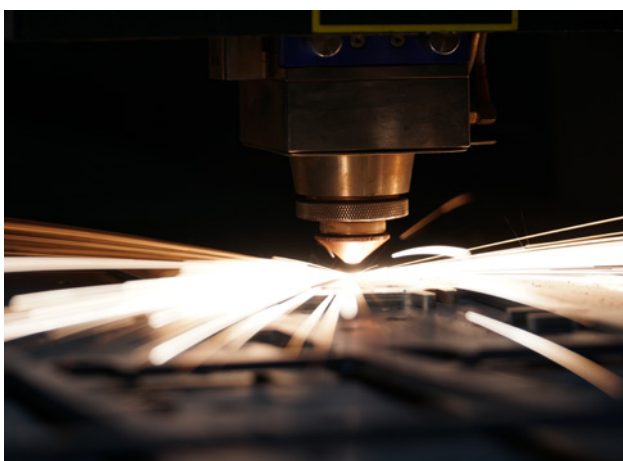
abisms.com

**ORANGE  
PAGES**

No 10, EKİM 2024

advanced  
beneficial  
ideas**KATLANIR SİSTEMLER  
BÖLÜM II**







abi

advanced  
beneficial  
ideas

[abisms.com](http://abisms.com)